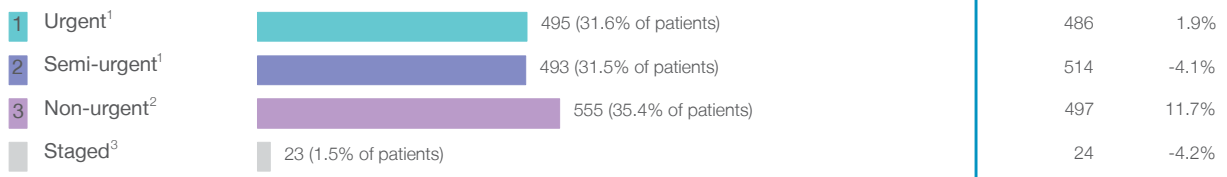


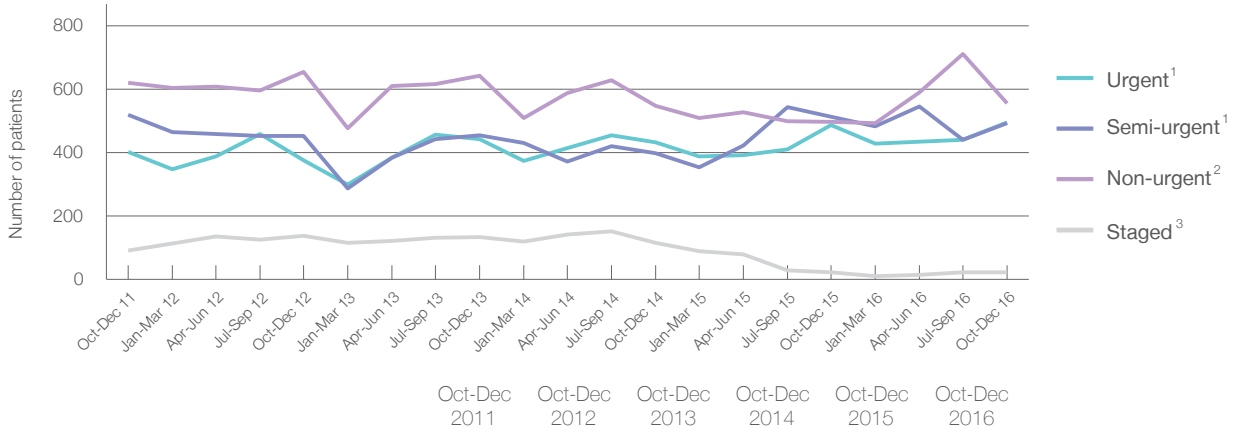
The Children's Hospital at Westmead: Elective surgery performed

October to December 2016

Patients who received elective surgery by urgency category: 1,566 patients



Patients who received elective surgery by urgency category by quarter, October 2011 to December 2016



Urgency Category	Oct-Dec 2011	Oct-Dec 2012	Oct-Dec 2013	Oct-Dec 2014	Oct-Dec 2015	Oct-Dec 2016
All categories	1,634	1,620	1,672	1,494	1,521	1,566
Urgent ¹	402	375	442	433	486	495
Semi-urgent ¹	520	453	454	398	514	493
Non-urgent ²	620	655	642	548	497	555
Staged ³	92	137	134	115	24	23

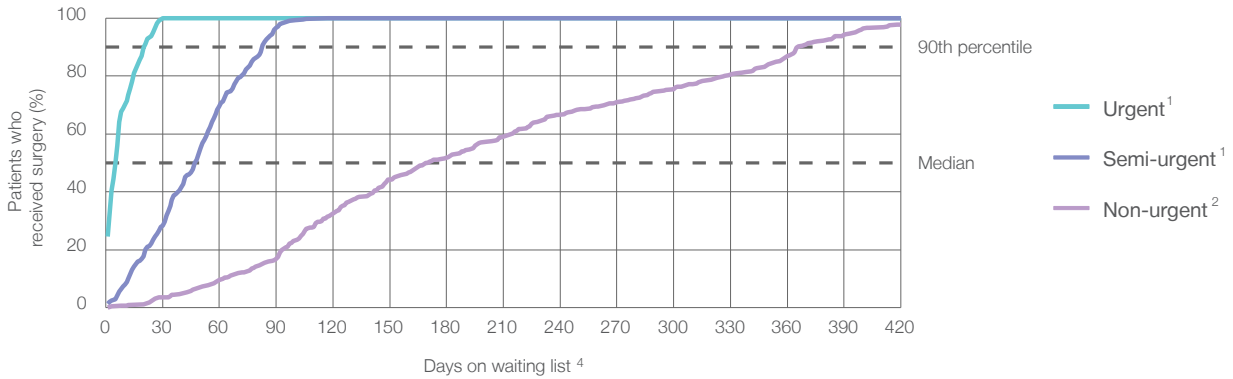
The Children's Hospital at Westmead: Time waited to receive elective surgery

October to December 2016

Percentage of patients who received surgery within the clinically recommended timeframe

Urgency Category	Recommended Timeframe	Percentage	Same period last year	Peer group (this period)
1 Urgent ¹	Recommended: 30 days	100%	99.8%	100%
2 Semi-urgent ¹	Recommended: 90 days	96.8%	79.8%	96.4%
3 Non-urgent ²	Recommended: 365 days	89.7%	80.7%	91.8%

Percentage of patients who received elective surgery by waiting time (days)



Waiting time (days) for people who received surgery by urgency category

Urgency Category	Number of Patients	Median time to receive surgery	90th percentile time to receive surgery	Peer group (this period)	This hospital (same period last year)	Peer group (same period last year)
1 Urgent ¹	495 patients	6 days	21 days	6	5	5
2 Semi-urgent ¹	493 patients	48 days	83 days	41	59	48
3 Non-urgent ²	555 patients	170 days	366 days	176	191	172

The Children's Hospital at Westmead: Time waited to receive elective surgery

October to December 2016

Median ⁵ waiting time (days) for patients who received elective surgery by specialty of surgeon		Same period last year	Peer group (this period)
Cardiothoracic surgery	45 days (77 patients)	45	40
Ear, nose and throat surgery	83 days (211 patients)	86	85
General surgery	31 days (502 patients)	20	29
Gynaecology	46 days (15 patients)	16	32
Medical	6 days (60 patients)	8	6
Neurosurgery	24 days (33 patients)	21	24
Ophthalmology	58 days (150 patients)	85	54
Orthopaedic surgery	63 days (306 patients)	44	63
Plastic surgery	25 days (165 patients)	54	57
Urology	49 days (47 patients)	54	31
Vascular surgery	n/a (0 patients)	n/a	n/a

Median ⁵ waiting time (days) for patients who received elective surgery by common procedures ⁷		Same period last year	Peer group (this period)
Abdominal hysterectomy	n/a (0 patients)	n/a	n/a
Cataract extraction	* (5 patients)	56	*
Cholecystectomy	* (5 patients)	*	*
Coronary artery bypass graft	* (< 5 patients)	n/a	*
Cystoscopy	31 days (28 patients)	44	27
Haemorrhoidectomy	n/a (0 patients)	n/a	n/a
Hysteroscopy	n/a (0 patients)	n/a	n/a
Inguinal herniorrhaphy	13 days (75 patients)	18	14
Myringoplasty / Tympanoplasty	* (5 patients)	*	*
Myringotomy	* (< 5 patients)	*	*
Other - General	39 days (156 patients)	8	35
Prostatectomy	n/a (0 patients)	n/a	n/a
Septoplasty	* (< 5 patients)	*	*
Tonsillectomy	207 days (62 patients)	96	217
Total hip replacement	n/a (0 patients)	n/a	n/a
Total knee replacement	n/a (0 patients)	n/a	n/a
Varicose veins stripping and ligation	n/a (0 patients)	n/a	n/a

The Children's Hospital at Westmead: Elective surgery waiting list

October to December 2016

Patients ready for surgery on waiting list at start of quarter: 1,745 patients

Patients ready for surgery on waiting list at end of quarter: 1,743 patients

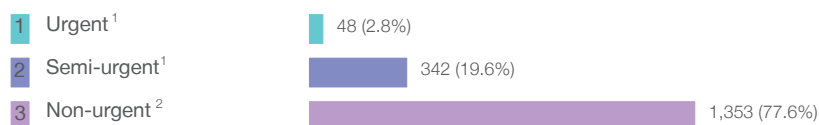
Patients not ready for surgery⁸ on waiting list at end of quarter: 369 patients

	Same period last year	Change since one year ago
Patients ready for surgery on waiting list at start of quarter	2,104	-17.1%
Patients ready for surgery on waiting list at end of quarter	1,998	-12.8%
Patients not ready for surgery ⁸ on waiting list at end of quarter	365	1.1%

The Children's Hospital at Westmead: Patients ready for elective surgery

as at 31st December 2016

Patients ready for surgery on waiting list by urgency category: 1,743 patients



	Same period last year	Change since one year ago
Urgent ¹	22	118.2%
Semi-urgent ¹	397	-13.9%
Non-urgent ²	1,579	-14.3%

The Children's Hospital at Westmead: Patients ready for elective surgery

as at 31st December 2016

Patients ready for elective surgery by specialty of surgeon: 1,743 patients

	As at 31 Dec 2016	Same time last year	Change since one year ago
All specialties	1,743	1,998	-12.8%
Cardiothoracic surgery	41	53	-22.6%
Ear, nose and throat surgery	402	480	-16.3%
General surgery	413	477	-13.4%
Gynaecology	7	7	0.0%
Medical	21	< 5	*
Neurosurgery	11	5	120.0%
Ophthalmology	279	265	5.3%
Orthopaedic surgery	337	392	-14.0%
Plastic surgery	201	246	-18.3%
Urology	31	70	-55.7%
Vascular surgery	0	0	n/a

Patients ready for elective surgery for common procedures ⁷

	As at 31 Dec 2016	Same time last year	Change since one year ago
Abdominal hysterectomy	< 5	< 5	n/a
Cataract extraction	< 5	9	*
Cholecystectomy	< 5	< 5	*
Coronary artery bypass graft	0	< 5	n/a
Cystoscopy	10	< 5	*
Haemorrhoidectomy	0	< 5	n/a
Hysteroscopy	0	< 5	n/a
Inguinal herniorrhaphy	23	27	-14.8%
Myringoplasty / Tympanoplasty	10	11	-9.1%
Myringotomy	19	< 5	*
Other - General	84	129	-34.9%
Prostatectomy	0	< 5	n/a
Septoplasty	8	< 5	*
Tonsillectomy	113	180	-37.2%
Total hip replacement	0	< 5	n/a
Total knee replacement	0	< 5	n/a
Varicose veins stripping and ligation	0	< 5	n/a

The Children's Hospital at Westmead: Patients ready for elective surgery as at 31st December 2016

Patients ready for elective surgery, on the waiting list for longer than 12 months

	As at 31 Dec 2016	Same time last year
All specialties	10	75

- * Suppressed due to small numbers and to protect privacy. Relevant graphs are also suppressed.
- < 5 Less than five patients. For measures by urgency category, counts are included in an adjacent category. Relevant graphs are also suppressed.
1. Excluding staged procedures.
 2. Excluding staged procedures and cystoscopy.
 3. Including non-urgent cystoscopy.
 4. Excludes the total number of days the patient was coded as 'not ready for surgery'.
 5. This is the number of days it took for half of patients who received elective surgery during the period to be admitted and receive their surgery. The other half took equal to or longer than the median to be admitted for surgery.
 6. This is the number of days it took for 90% of patients who received elective surgery during the period to be admitted and receive their surgery. The final 10% of patients took equal to or longer than the 90th percentile.
 7. The procedures included in this list are procedures which are high volume; some may be associated with long waiting periods. For a description of these procedures see *Elective Surgery Glossary of Common Procedures, December 2012*.
 8. Includes staged procedures, non-urgent cystoscopy, and patients currently not available for personal reasons.
- For more information: For details of methods, see the *Technical Supplement: Elective surgery measures, July to September 2016*.
- Note:** All percentages rounded to whole numbers and therefore percentages may not add to 100%.
- Source:** Waiting List Collection On-Line System, NSW Health (extracted 20 January 2017.).