

From March 2017, Hospital Quarterly reports the 90th percentile time, rather than the 95th percentile time, for related ED measures.

## Kurri Kurri District Hospital: Emergency department (ED) overview

October to December 2016

All presentations:<sup>1</sup> 1,035 patients

Emergency presentations:<sup>2</sup> 968 patients

Same period last year	Change since one year ago
1,321	-21.7%
1,303	-25.7%

## Kurri Kurri District Hospital: Time patients waited to start treatment<sup>3</sup>

October to December 2016

**Triage 2** Emergency (e.g. chest pain, severe burns): 78 patients

Median time to start treatment<sup>4</sup> 4 minutes

90th percentile time to start treatment<sup>5</sup> \*

**Triage 3** Urgent (e.g. moderate blood loss, dehydration): 270 patients

Median time to start treatment<sup>4</sup> 9 minutes

90th percentile time to start treatment<sup>5</sup> 20 minutes

**Triage 4** Semi-urgent (e.g. sprained ankle, earache): 509 patients

Median time to start treatment<sup>4</sup> 13 minutes

90th percentile time to start treatment<sup>5</sup> 46 minutes

**Triage 5** Non-urgent (e.g. small cuts or abrasions): 111 patients

Median time to start treatment<sup>4</sup> 9 minutes

90th percentile time to start treatment<sup>5</sup> \*

Same period last year	NSW (this period)
75	
3 minutes	8 minutes
*	26 minutes
344	
11 minutes	20 minutes
35 minutes	67 minutes
676	
13 minutes	25 minutes
68 minutes	97 minutes
208	
11 minutes	24 minutes
57 minutes	103 minutes

## Kurri Kurri District Hospital: Time from presentation until leaving the ED

October to December 2016

Attendances used to calculate time to leaving the ED:<sup>6</sup> 1,035 patients

Percentage of patients who spent four hours or less in the ED



Same period last year	Change since one year ago
1,321	-21.7%
93.9%	

\* Suppressed due to small number of patients and to protect privacy. Relevant graphs are also suppressed.

- All emergency and non-emergency attendances at the emergency department (ED).
- All attendances that have a triage category and are coded as emergency presentations or unplanned return visits.
- Some patients are excluded from ED time measures due to calculation requirements. For details, see the *Technical Supplement: Emergency department measures, January to March 2016*.
- The median is the time by which half of patients started treatment. The other half of patients waited equal to or longer than this time.
- The 90th percentile is the time by which 90% of patients started treatment. The final 10% of patients waited equal to or longer than this time.
- All presentations that have a departure time.

**Note:** Presentation time is the earlier time recorded for clerical registration or the triage process. Treatment time is the earliest time recorded when a healthcare professional provides medical care relevant to the patient's presenting problems.

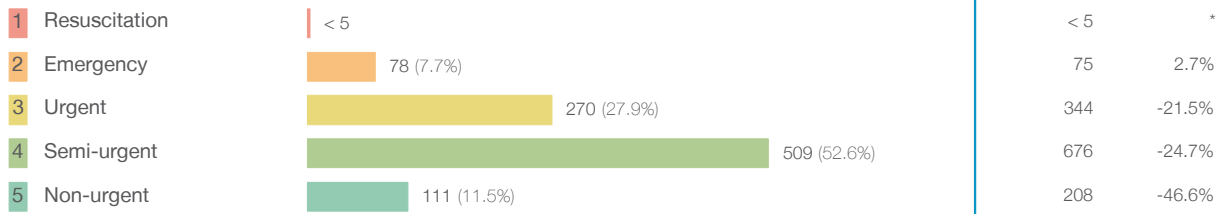
**Source:** Health Information Exchange, NSW Health (extracted 24 January 2017).

From March 2017, Hospital Quarterly reports the 90th percentile time, rather than the 95th percentile time, for related ED measures.

## Kurri Kurri District Hospital: Patients presenting to the emergency department October to December 2016

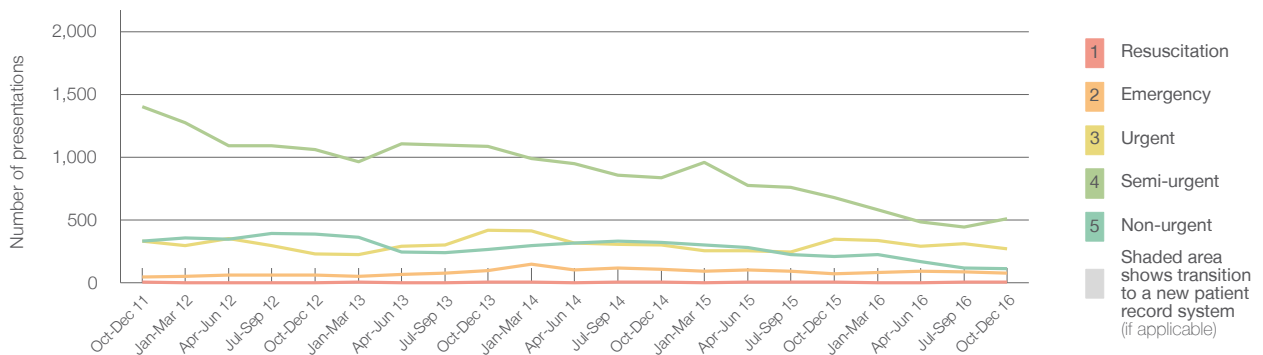
All presentations<sup>1</sup> 1,035 patients

Emergency presentations<sup>2</sup> by triage category: 968 patients



Same period last year	Change since one year ago
1,321	-21.7%
1,303	-25.7%
< 5	*
75	2.7%
344	-21.5%
676	-24.7%
208	-46.6%

Emergency presentations<sup>2</sup> by quarter, October 2011 to December 2016 †



	Oct-Dec 2011	Oct-Dec 2012	Oct-Dec 2013	Oct-Dec 2014	Oct-Dec 2015	Oct-Dec 2016
Resuscitation	< 5	0	< 5	5	< 5	< 5
Emergency	48	58	98	105	75	78
Urgent	330	230	416	299	344	270
Semi-urgent	1,402	1,062	1,085	836	676	509
Non-urgent	333	385	265	322	208	111
All emergency presentations	2,113	1,735	1,864	1,567	1,303	968

## Kurri Kurri District Hospital: Patients arriving by ambulance October to December 2016

ED Transfer of care time is not currently available for this hospital.<sup>7</sup>

(†) Data points are not shown in graphs for quarters when patient numbers are too small.

(‡) Caution is advised when interpreting abrupt changes over time at the hospital level. For example, performance before and after trans For more information, see Background Paper: Approaches to reporting time measures of emergency department performance, December 2011.

From March 2017, Hospital Quarterly reports the 90th percentile time, rather than the 95th percentile time, for related ED measures.

## Kurri Kurri District Hospital: Time patients waited to start treatment, triage 2 October to December 2016

**Triage 2** Emergency (e.g. chest pain, severe burns)

Number of triage 2 patients: 78

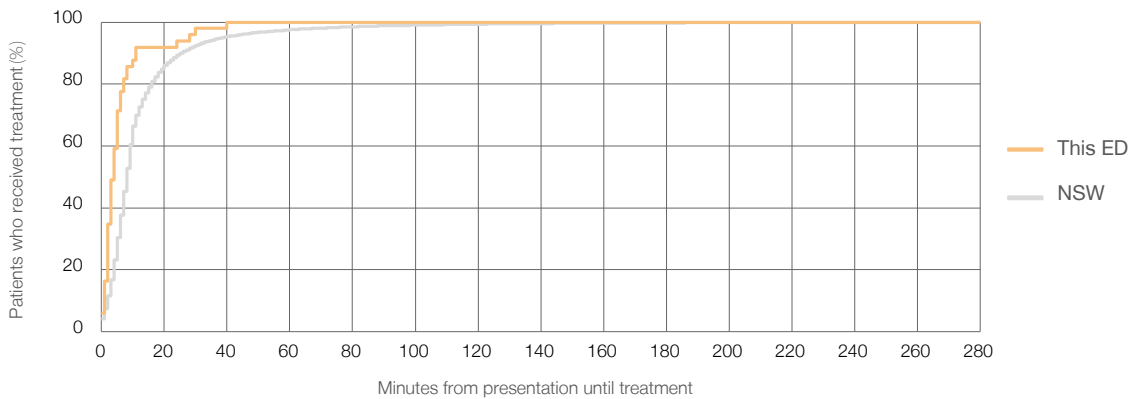
Number of triage 2 patients used to calculate waiting time:<sup>3</sup> 49

Median time to start treatment<sup>4</sup> 4 minutes

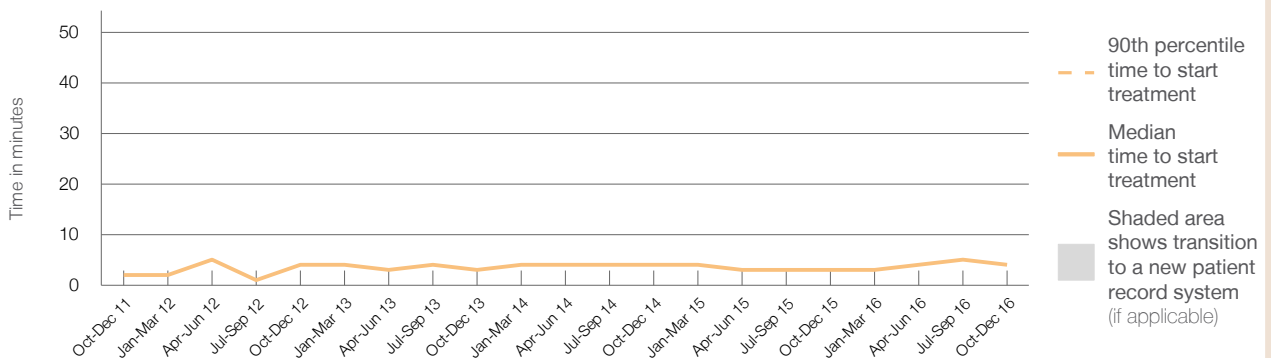
90th percentile time to start treatment<sup>5</sup> \*

Same period last year	NSW (this period)
75	57
3 minutes	8 minutes
*	26 minutes

### Percentage of triage 2 patients who received treatment by time, October to December 2016



### Time patients waited to start treatment (minutes) for triage 2 patients, October 2011 to December 2016<sup>†‡</sup>



	Oct-Dec 2011	Oct-Dec 2012	Oct-Dec 2013	Oct-Dec 2014	Oct-Dec 2015	Oct-Dec 2016
Median time to start treatment <sup>4</sup> (minutes)	2	4	3	4	3	4
90th percentile time to start treatment <sup>5</sup> (minutes)	*	*	*	*	*	*

(†) Data points are not shown in graphs for quarters when patient numbers are too small.

(‡) Caution is advised when interpreting abrupt changes over time at the hospital level. For example, performance before and after trans For more information, see Background Paper: Approaches to reporting time measures of emergency department performance, December 2011.

From March 2017, Hospital Quarterly reports the 90th percentile time, rather than the 95th percentile time, for related ED measures.

## Kurri Kurri District Hospital: Time patients waited to start treatment, triage 3 October to December 2016

**Triage 3** Urgent (e.g. moderate blood loss, dehydration)

Number of triage 3 patients: 270

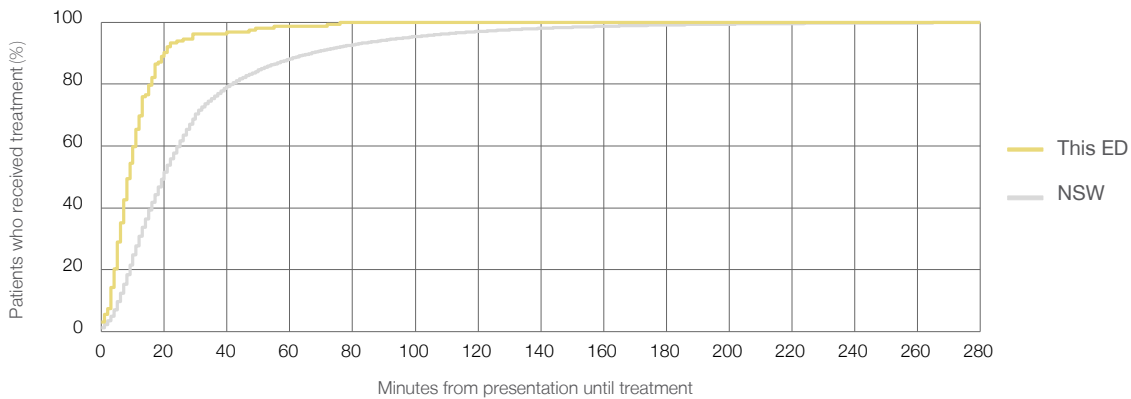
Number of triage 3 patients used to calculate waiting time:<sup>3</sup> 162

Median time to start treatment<sup>4</sup> 9 minutes

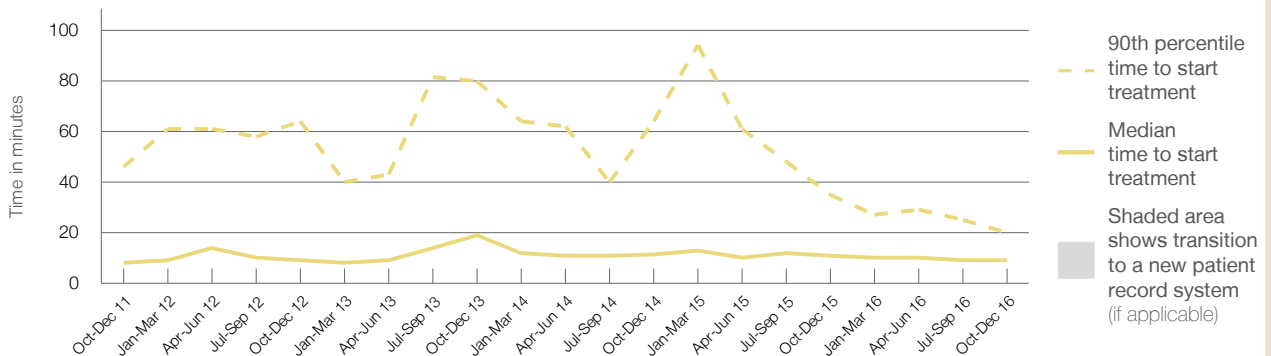
90th percentile time to start treatment<sup>5</sup> 20 minutes

Same period last year	NSW (this period)
344	
253	
11 minutes	20 minutes
35 minutes	67 minutes

### Percentage of triage 3 patients who received treatment by time, October to December 2016



### Time patients waited to start treatment (minutes) for triage 3 patients, October 2011 to December 2016<sup>†‡</sup>



	Oct-Dec 2011	Oct-Dec 2012	Oct-Dec 2013	Oct-Dec 2014	Oct-Dec 2015	Oct-Dec 2016
Median time to start treatment <sup>4</sup> (minutes)	8	9	19	12	11	9
90th percentile time to start treatment <sup>5</sup> (minutes)	46	64	80	64	35	20

(†) Data points are not shown in graphs for quarters when patient numbers are too small.

(‡) Caution is advised when interpreting abrupt changes over time at the hospital level. For example, performance before and after trans For more information, see Background Paper: Approaches to reporting time measures of emergency department performance, December 2011.

From March 2017, Hospital Quarterly reports the 90th percentile time, rather than the 95th percentile time, for related ED measures.

## Kurri Kurri District Hospital: Time patients waited to start treatment, triage 4 October to December 2016

**Triage 4** Semi-urgent (e.g. sprained ankle, earache)

Number of triage 4 patients: 509

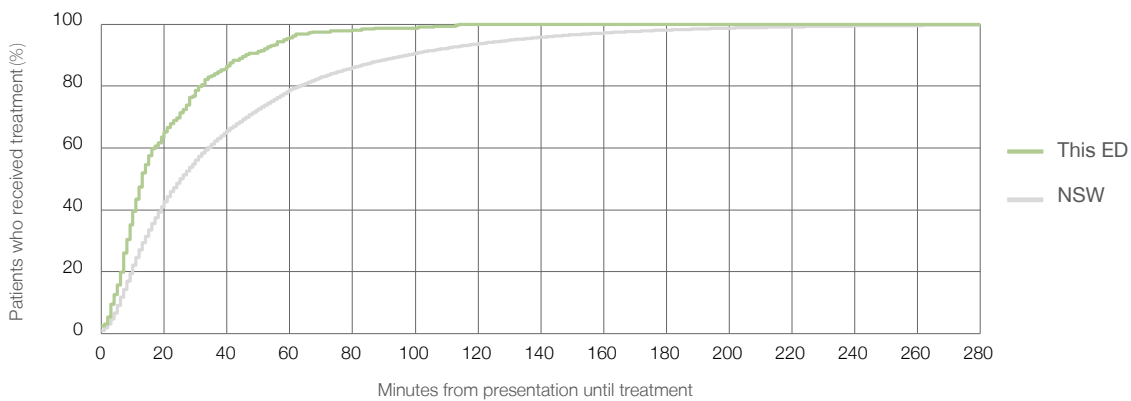
Number of triage 4 patients used to calculate waiting time:<sup>3</sup> 318

Median time to start treatment<sup>4</sup>  13 minutes

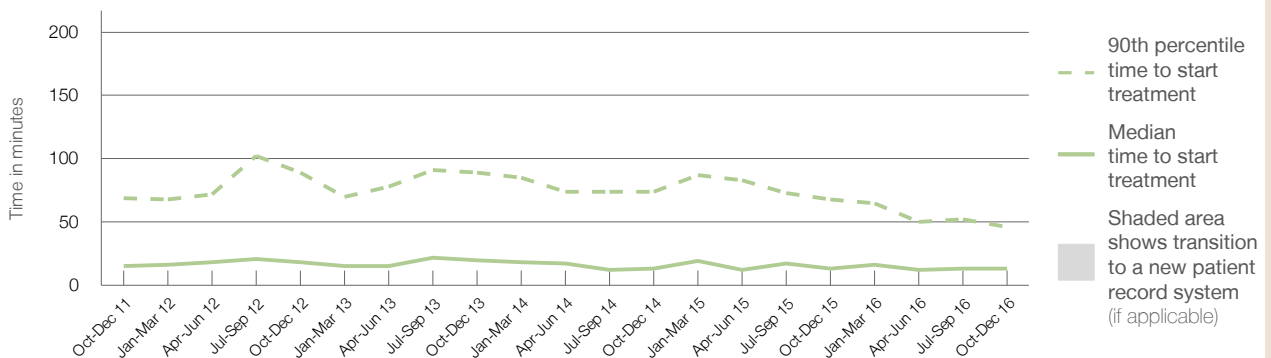
90th percentile time to start treatment<sup>5</sup>  46 minutes

Same period last year	NSW (this period)
676	457
13 minutes	25 minutes
68 minutes	97 minutes

### Percentage of triage 4 patients who received treatment by time, October to December 2016



### Time patients waited to start treatment (minutes) for triage 4 patients, October 2011 to December 2016<sup>†‡</sup>



	Oct-Dec 2011	Oct-Dec 2012	Oct-Dec 2013	Oct-Dec 2014	Oct-Dec 2015	Oct-Dec 2016
Median time to start treatment <sup>4</sup> (minutes)	15	18	20	13	13	13
90th percentile time to start treatment <sup>5</sup> (minutes)	69	89	89	74	68	46

(†) Data points are not shown in graphs for quarters when patient numbers are too small.

(‡) Caution is advised when interpreting abrupt changes over time at the hospital level. For example, performance before and after trans For more information, see Background Paper: Approaches to reporting time measures of emergency department performance, December 2011.

From March 2017, Hospital Quarterly reports the 90th percentile time, rather than the 95th percentile time, for related ED measures.

## Kurri Kurri District Hospital: Time patients waited to start treatment, triage 5 October to December 2016

**Triage 5** Non-urgent (e.g. small cuts or abrasions)

Number of triage 5 patients: 111

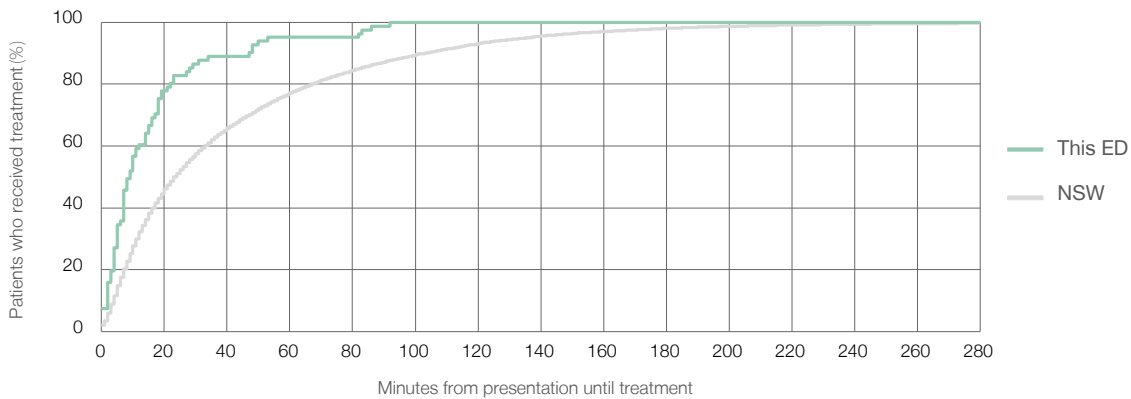
Number of triage 5 patients used to calculate waiting time:<sup>3</sup> 81

Median time to start treatment<sup>4</sup> 9 minutes

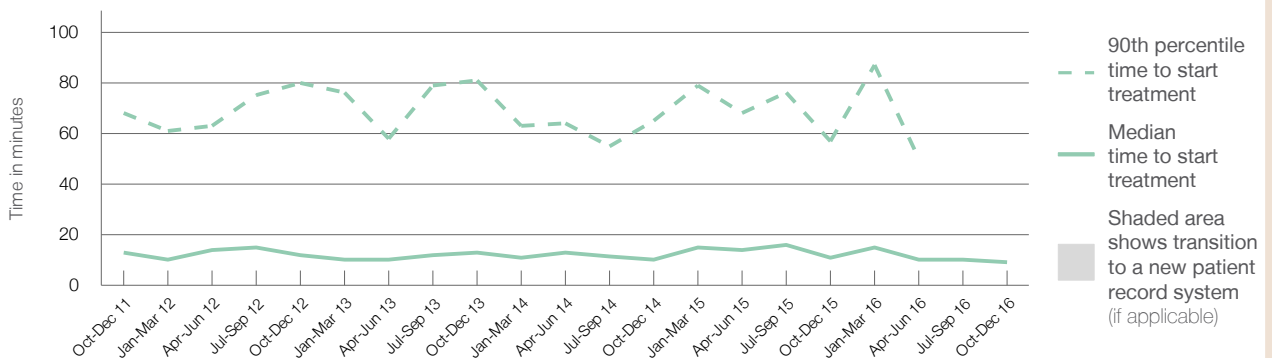
90th percentile time to start treatment<sup>5</sup> \*

Same period last year	NSW (this period)
208	150
11 minutes	24 minutes
57 minutes	103 minutes

### Percentage of triage 5 patients who received treatment by time, October to December 2016



### Time patients waited to start treatment (minutes) for triage 5 patients, October 2011 to December 2016<sup>†‡</sup>



	Oct-Dec 2011	Oct-Dec 2012	Oct-Dec 2013	Oct-Dec 2014	Oct-Dec 2015	Oct-Dec 2016
Median time to start treatment <sup>4</sup> (minutes)	13	12	13	10	11	9
90th percentile time to start treatment <sup>5</sup> (minutes)	68	80	81	65	57	*

(†) Data points are not shown in graphs for quarters when patient numbers are too small.

(‡) Caution is advised when interpreting abrupt changes over time at the hospital level. For example, performance before and after trans For more information, see Background Paper: Approaches to reporting time measures of emergency department performance, December 2011.

From March 2017, Hospital Quarterly reports the 90th percentile time, rather than the 95th percentile time, for related ED measures.

## Kurri Kurri District Hospital: Time patients spent in the ED October to December 2016

All presentations:<sup>1</sup> 1,035 patients

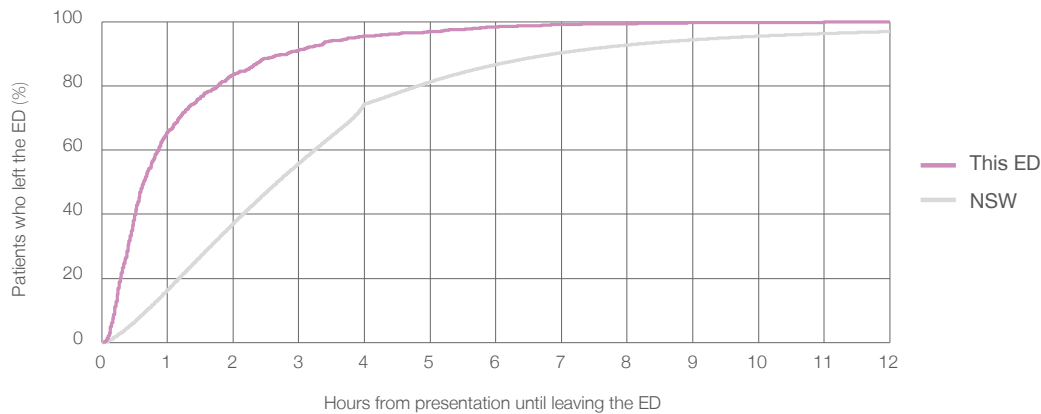
Presentations used to calculate time to leaving the ED:<sup>6</sup> 1,035 patients

Median time spent in the ED<sup>8</sup> ■ 0 hours and 39 minutes

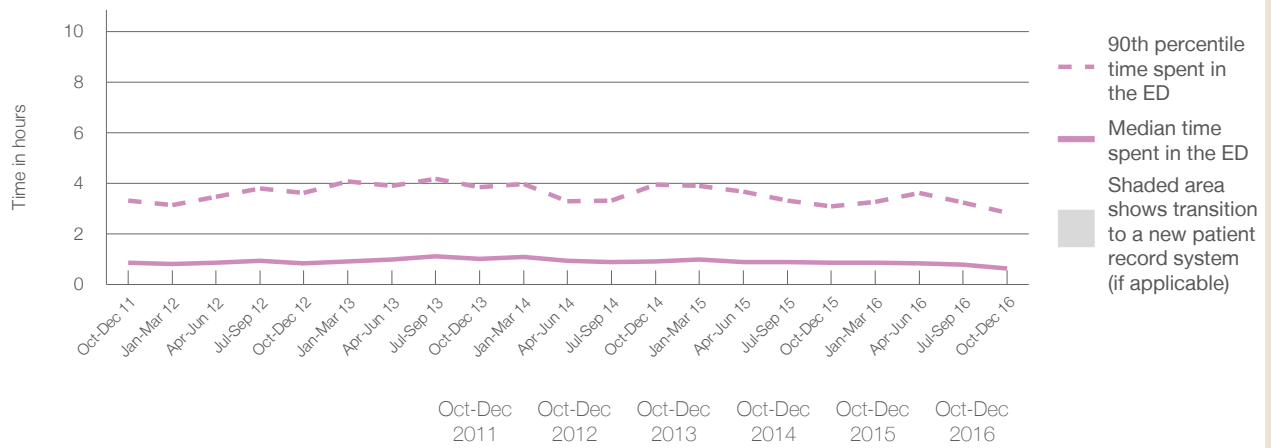
90th percentile time spent in the ED<sup>9</sup> ■ 2 hours and 50 minutes

Same period last year	NSW (this period)
1,321	1,321
0 hours and 52 minutes	2 hours and 41 minutes
3 hours and 6 minutes	6 hours and 54 minutes

### Percentage of patients who left the ED by time, October to December 2016



### Time patients spent in the ED, by quarter, October 2011 to December 2016<sup>†‡</sup>



	Oct-Dec 2011	Oct-Dec 2012	Oct-Dec 2013	Oct-Dec 2014	Oct-Dec 2015	Oct-Dec 2016
Median time to leaving the ED <sup>8</sup> (hours, minutes)	0h 53m	0h 51m	1h 2m	0h 56m	0h 52m	0h 39m
90th percentile time to leaving the ED <sup>9</sup> (hours, minutes)	3h 20m	3h 38m	3h 51m	3h 57m	3h 6m	2h 50m

(†) Data points are not shown in graphs for quarters when patient numbers are too small.

(‡) Caution is advised when interpreting abrupt changes over time at the hospital level. For example, performance before and after trans For more information, see Background Paper: Approaches to reporting time measures of emergency department performance, December 2011.

From March 2017, Hospital Quarterly reports the 90th percentile time, rather than the 95th percentile time, for related ED measures.

## Kurri Kurri District Hospital: Time patients spent in the ED

### By mode of separation

October to December 2016

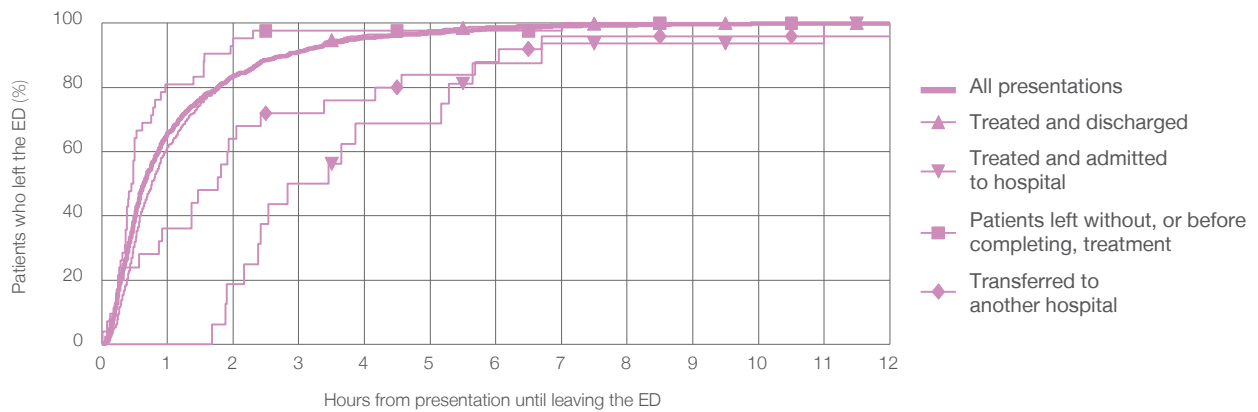
All presentations:<sup>1</sup> 1,035 patients

Presentations used to calculate time to leaving the ED:<sup>6</sup> 1,035 patients

Treated and discharged	616 (59.5%)
Treated and admitted to hospital	16 (1.5%)
Patient left without, or before completing, treatment	42 (4.1%)
Transferred to another hospital	25 (2.4%)
Other	336 (32.5%)

Same period last year	Change since one year ago
1,321	-21.7%
829	-25.7%
31	-48.4%
104	-59.6%
52	-51.9%
305	10.2%

Percentage of patients who left the ED by time and mode of separation, October to December 2016<sup>†‡</sup>



1 hour 2 hours 3 hours 4 hours 6 hours 8 hours 10 hours 12 hours

	1 hour	2 hours	3 hours	4 hours	6 hours	8 hours	10 hours	12 hours
Treated and discharged	61.4%	83.6%	91.2%	96.3%	99.0%	100%	100%	100%
Treated and admitted to hospital	0%	18.8%	50.0%	68.8%	87.5%	93.8%	93.8%	100%
Patient left without, or before completing, treatment	81.0%	95.2%	97.6%	97.6%	97.6%	100%	100%	100%
Transferred to another hospital	36.0%	64.0%	72.0%	76.0%	88.0%	96.0%	96.0%	96.0%
All presentations	65.7%	83.6%	91.2%	95.5%	98.3%	99.3%	99.8%	99.9%

(†) Data points are not shown in graphs for quarters when patient numbers are too small.

(‡) Caution is advised when interpreting abrupt changes over time at the hospital level. For example, performance before and after trans For more information, see Background Paper: Approaches to reporting time measures of emergency department performance, December 2011.



From March 2017, Hospital Quarterly reports the 90th percentile time, rather than the 95th percentile time, for related ED measures.

## Kurri Kurri District Hospital: Time spent in the ED

### Percentage of patients who spent four hours or less in the ED

#### October to December 2016

All presentations at the emergency department:<sup>1</sup> 1,035 patients

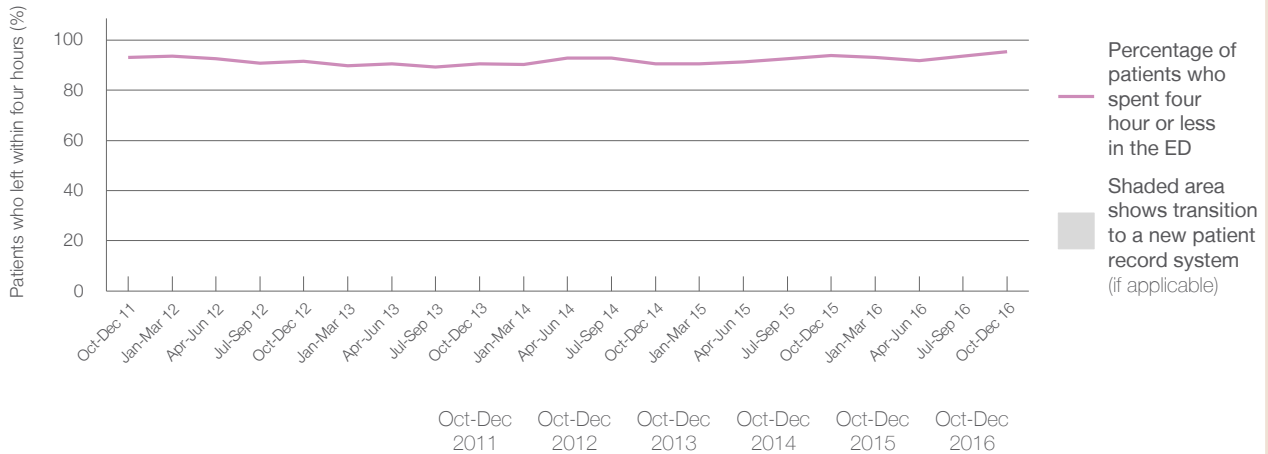
Presentations used to calculate time to leaving the ED:<sup>6</sup> 1,035 patients

Percentage of patients who spent four hours or less in the ED



	Same period last year	Change since one year ago
All presentations at the emergency department: <sup>1</sup>	1,321	-21.7%
Presentations used to calculate time to leaving the ED: <sup>6</sup>	1,321	-21.7%
Percentage of patients who spent four hours or less in the ED	93.9%	

#### Percentage of patients who spent four hours or less in the ED, by quarter, October 2011 to December 2016<sup>†‡</sup>



Patients who left within four hours (%)	93.0%	91.5%	90.5%	90.4%	93.9%	95.5%
---	-------	-------	-------	-------	-------	-------

\* Suppressed due to small numbers and to protect privacy. Relevant graphs are also suppressed.

† Data points are not shown in graphs for quarters when patient numbers were too small.

‡ Caution is advised when interpreting abrupt changes over time at the hospital level. For example, performance before and after transition to a new information system is not directly comparable. For more information see *Background Paper: Approaches to reporting time measures of emergency department performance, December 2011*.

- All emergency and non-emergency presentations at the emergency department (ED).
- All presentations that have a triage category and are coded as emergency presentations or unplanned return visits.
- Some patients are excluded from ED time measures due to calculation requirements. For details, see the *Technical Supplement: Emergency department measures, January to March 2016*.
- The median is the time by which half of patients started treatment. The other half of patients took equal to or longer than this time.
- The 90th percentile is the time by which 90% of patients started treatment. The final 10% of patients took equal to or longer than this time.
- All presentations that have a departure time.
- Transfer of care time refers to the period between arrival of patients at the ED by ambulance and the transfer of responsibility for their care from paramedics to ED staff in an ED treatment zone. For more information see *Spotlight on Measurement: measuring transfer of care from the ambulance to the emergency department*.
- The median is the time by which half of patients left the ED. The other half of patients took equal to or longer than this time.
- The 90th percentile is the time by which 90% of patients left the ED. The final 10% of patients took equal to or longer than this time.

**Note:** Presentation time is the earlier of times recorded for the start of clerical registration or the triage process. Treatment time is the earliest time recorded when a healthcare professional provides medical care that is relevant to the patient's presenting problems. For patients who were treated and discharged, departure time is the time when treatment was completed. For all other patients, departure time is the time when the patient actually left the ED.

**Note:** All percentages are rounded and therefore percentages may not add to 100%.

**Sources:** ED data from Health Information Exchange, NSW Health (extracted 24 January 2017).  
Transfer of care data from Transfer of Care Reporting System (extracted 24 January 2017).