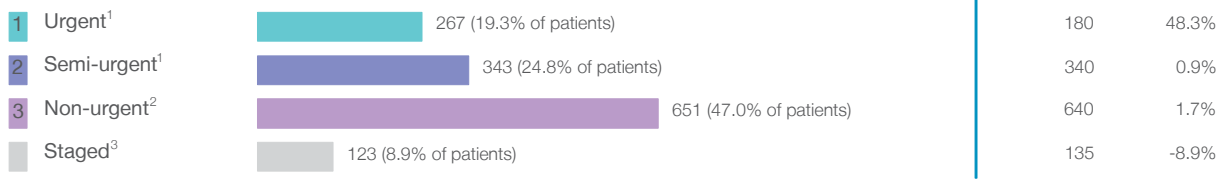


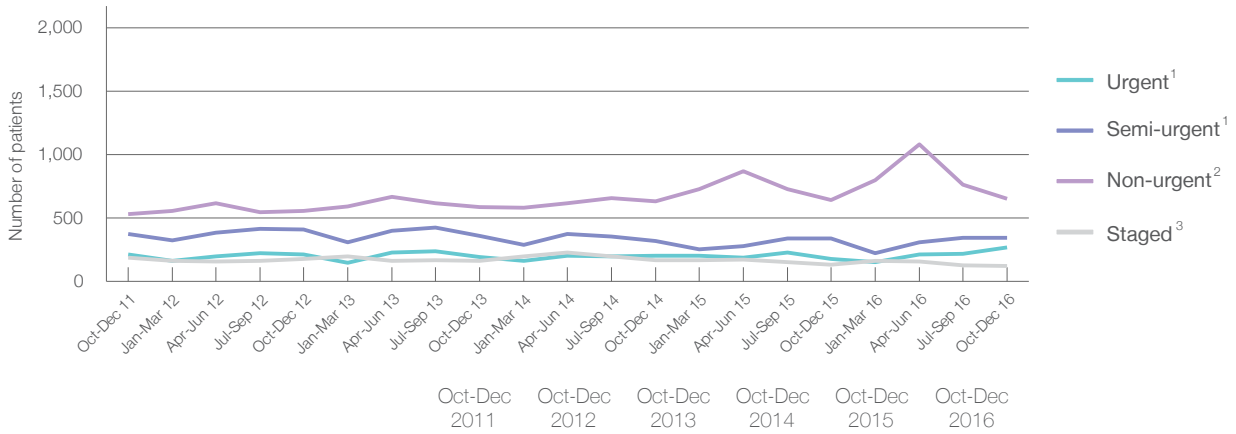
Bankstown / Lidcombe Hospital: Elective surgery performed

October to December 2016

Patients who received elective surgery by urgency category: 1,384 patients



Patients who received elective surgery by urgency category by quarter, October 2011 to December 2016



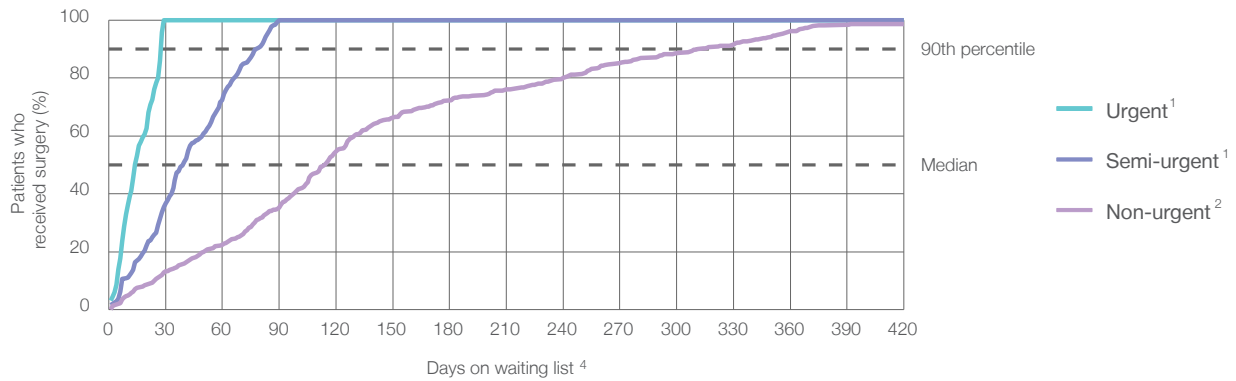
Urgency Category	Oct-Dec 2011	Oct-Dec 2012	Oct-Dec 2013	Oct-Dec 2014	Oct-Dec 2015	Oct-Dec 2016
All categories	1,305	1,361	1,309	1,321	1,295	1,384
Urgent ¹	212	212	195	203	180	267
Semi-urgent ¹	373	413	361	320	340	343
Non-urgent ²	532	558	588	630	640	651
Staged ³	188	178	165	168	135	123

Bankstown / Lidcombe Hospital: Time waited to receive elective surgery October to December 2016

Percentage of patients who received surgery within the clinically recommended timeframe

	Recommended: (days)	Percentage	Same period last year	Peer group (this period)
1 Urgent ¹	30 days	100%	100%	99.7%
2 Semi-urgent ¹	90 days	100%	100%	96.0%
3 Non-urgent ²	365 days	96.9%	96.9%	95.6%

Percentage of patients who received elective surgery by waiting time (days)



Waiting time (days) for people who received surgery by urgency category

Urgency Category	Median time to receive surgery (days)	90th percentile time to receive surgery (days)	Peer group (this period)	This hospital (same period last year)	Peer group (same period last year)
1 Urgent: ¹ 267 patients	14 days	28 days	9	15	8
2 Semi-urgent: ¹ 343 patients	40 days	79 days	41	49	42
3 Non-urgent: ² 651 patients	115 days	311 days	161	197	175

Bankstown / Lidcombe Hospital: Time waited to receive elective surgery

October to December 2016

Median ⁵ waiting time (days) for patients who received elective surgery by specialty of surgeon		Same period last year	Peer group (this period)
Cardiothoracic surgery	n/a (0 patients)	n/a	21
Ear, nose and throat surgery	103 days (53 patients)	252	99
General surgery	25 days (378 patients)	34	24
Gynaecology	49 days (142 patients)	64	27
Medical	n/a (0 patients)	n/a	17
Neurosurgery	71 days (15 patients)	*	41
Ophthalmology	98 days (166 patients)	324	97
Orthopaedic surgery	190 days (205 patients)	293	78
Plastic surgery	28 days (94 patients)	40	19
Urology	31 days (257 patients)	36	32
Vascular surgery	29 days (74 patients)	32	17

Median ⁵ waiting time (days) for patients who received elective surgery by common procedures ⁷		Same period last year	Peer group (this period)
Abdominal hysterectomy	* (6 patients)	*	36
Cataract extraction	103 days (142 patients)	328	117
Cholecystectomy	55 days (53 patients)	49	42
Coronary artery bypass graft	n/a (0 patients)	n/a	26
Cystoscopy	28 days (148 patients)	45	30
Haemorrhoidectomy	51 days (16 patients)	83	63
Hysteroscopy	29 days (71 patients)	49	29
Inguinal herniorrhaphy	41 days (42 patients)	96	57
Myringoplasty / Tympanoplasty	* (< 5 patients)	*	155
Myringotomy	n/a (0 patients)	*	142
Other - General	21 days (48 patients)	26	18
Prostatectomy	57 days (37 patients)	71	59
Septoplasty	* (5 patients)	*	336
Tonsillectomy	126 days (17 patients)	269	290
Total hip replacement	170 days (31 patients)	288	129
Total knee replacement	253 days (59 patients)	332	253
Varicose veins stripping and ligation	140 days (31 patients)	148	90

Bankstown / Lidcombe Hospital: Elective surgery waiting list

October to December 2016

Patients ready for surgery on waiting list at start of quarter: 1,691 patients

Patients ready for surgery on waiting list at end of quarter: 1,783 patients

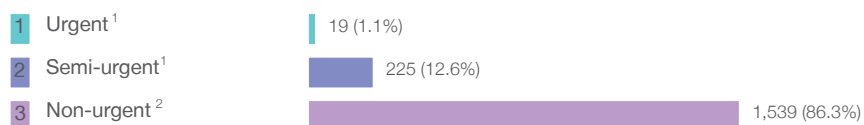
Patients not ready for surgery⁸ on waiting list at end of quarter: 497 patients

	Same period last year	Change since one year ago
Patients ready for surgery on waiting list at start of quarter	2,158	-21.6%
Patients ready for surgery on waiting list at end of quarter	2,149	-17.0%
Patients not ready for surgery ⁸ on waiting list at end of quarter	506	-1.8%

Bankstown / Lidcombe Hospital: Patients ready for elective surgery

as at 31st December 2016

Patients ready for surgery on waiting list by urgency category: 1,783 patients



	Same period last year	Change since one year ago
Urgent ¹	17	11.8%
Semi-urgent ¹	238	-5.5%
Non-urgent ²	1,894	-18.7%

Bankstown / Lidcombe Hospital: Patients ready for elective surgery

as at 31st December 2016

Patients ready for elective surgery by specialty of surgeon: 1,783 patients

	As at 31 Dec 2016	Same time last year	Change since one year ago
All specialties	1,783	2,149	-17.0%
Cardiothoracic surgery	0	0	n/a
Ear, nose and throat surgery	140	171	-18.1%
General surgery	277	340	-18.5%
Gynaecology	97	144	-32.6%
Medical	0	0	n/a
Neurosurgery	23	8	187.5%
Ophthalmology	418	596	-29.9%
Orthopaedic surgery	554	612	-9.5%
Plastic surgery	81	59	37.3%
Urology	94	114	-17.5%
Vascular surgery	99	105	-5.7%

Patients ready for elective surgery for common procedures ⁷

	As at 31 Dec 2016	Same time last year	Change since one year ago
Abdominal hysterectomy	12	13	-7.7%
Cataract extraction	376	550	-31.6%
Cholecystectomy	54	65	-16.9%
Coronary artery bypass graft	0	< 5	n/a
Cystoscopy	25	46	-45.7%
Haemorrhoidectomy	18	29	-37.9%
Hysteroscopy	21	51	-58.8%
Inguinal herniorrhaphy	45	69	-34.8%
Myringoplasty / Tympanoplasty	7	7	0.0%
Myringotomy	0	< 5	*
Other - General	27	29	-6.9%
Prostatectomy	35	49	-28.6%
Septoplasty	13	17	-23.5%
Tonsillectomy	58	84	-31.0%
Total hip replacement	62	71	-12.7%
Total knee replacement	239	218	9.6%
Varicose veins stripping and ligation	95	96	-1.0%

Bankstown / Lidcombe Hospital: Patients ready for elective surgery

as at 31st December 2016

Patients ready for elective surgery, on the waiting list for longer than 12 months

As at 31 Dec 2016 Same time last year

	As at 31 Dec 2016	Same time last year
All specialties	28	< 5

* Suppressed due to small numbers and to protect privacy. Relevant graphs are also suppressed.

< 5 Less than five patients. For measures by urgency category, counts are included in an adjacent category. Relevant graphs are also suppressed.

1. Excluding staged procedures.
2. Excluding staged procedures and cystoscopy.
3. Including non-urgent cystoscopy.
4. Excludes the total number of days the patient was coded as 'not ready for surgery'.
5. This is the number of days it took for half of patients who received elective surgery during the period to be admitted and receive their surgery. The other half took equal to or longer than the median to be admitted for surgery.
6. This is the number of days it took for 90% of patients who received elective surgery during the period to be admitted and receive their surgery. The final 10% of patients took equal to or longer than the 90th percentile.
7. The procedures included in this list are procedures which are high volume; some may be associated with long waiting periods. For a description of these procedures see *Elective Surgery Glossary of Common Procedures, December 2012*.
8. Includes staged procedures, non-urgent cystoscopy, and patients currently not available for personal reasons.

For more information: For details of methods, see the *Technical Supplement: Elective surgery measures, July to September 2016*.

Note: All percentages rounded to whole numbers and therefore percentages may not add to 100%.

Source: Waiting List Collection On-Line System, NSW Health (extracted 20 January 2017.).