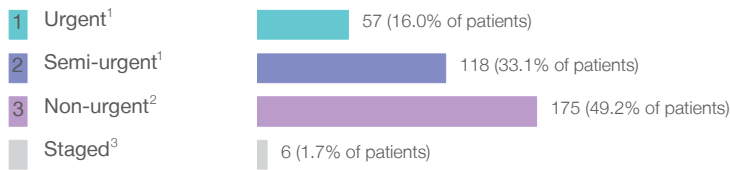


Bowral and District Hospital: Elective surgery performed

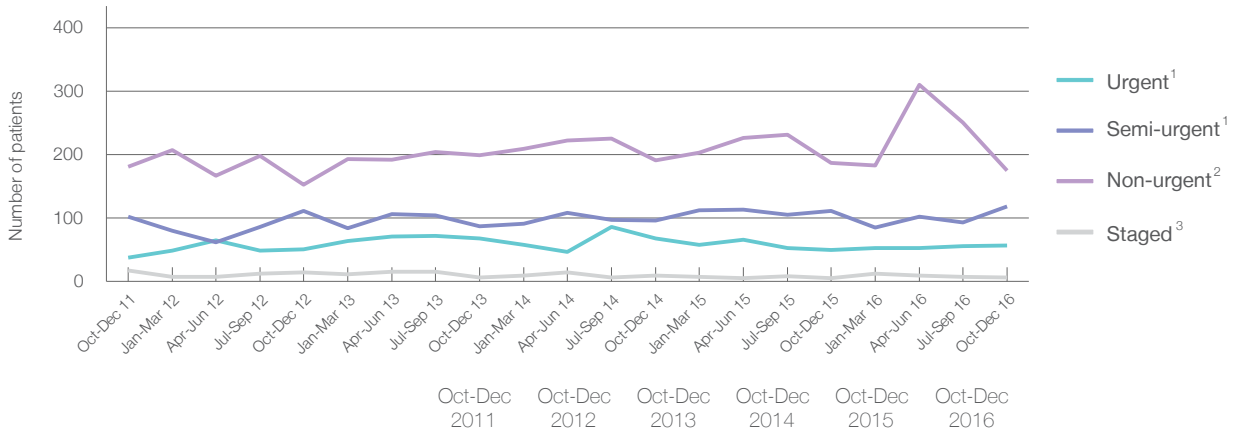
October to December 2016

Patients who received elective surgery by urgency category: 356 patients



	Same period last year	Change since one year ago
Urgent ¹	50	14.0%
Semi-urgent ¹	111	6.3%
Non-urgent ²	187	-6.4%
Staged ³	5	20.0%

Patients who received elective surgery by urgency category by quarter, October 2011 to December 2016



	Oct-Dec 2011	Oct-Dec 2012	Oct-Dec 2013	Oct-Dec 2014	Oct-Dec 2015	Oct-Dec 2016
All categories	339	330	360	365	353	356
Urgent ¹	38	51	68	68	50	57
Semi-urgent ¹	102	111	87	96	111	118
Non-urgent ²	181	153	199	191	187	175
Staged ³	18	15	6	10	5	6

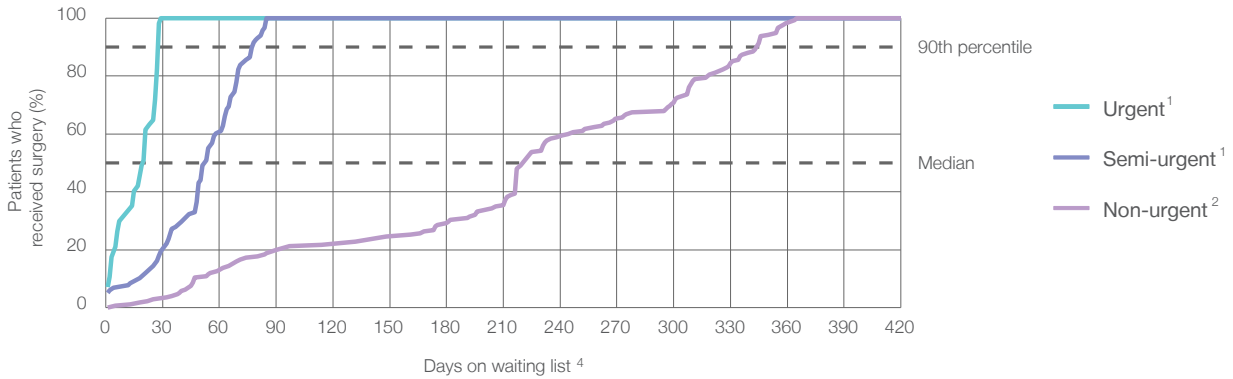
Bowral and District Hospital: Time waited to receive elective surgery

October to December 2016

Percentage of patients who received surgery within the clinically recommended timeframe

	Recommended:		Same period last year	Peer group (this period)
1 Urgent¹	30 days	100%	100%	99.8%
2 Semi-urgent¹	90 days	100%	100%	99.4%
3 Non-urgent²	365 days	100%	89.3%	98.7%

Percentage of patients who received elective surgery by waiting time (days)



Waiting time (days) for people who received surgery by urgency category

		Peer group (this period)	This hospital (same period last year)	Peer group (same period last year)
1 Urgent: ¹ 57 patients				
Median time to receive surgery	20 days	14	19	14
90th percentile time to receive surgery	*	27	*	27
2 Semi-urgent: ¹ 118 patients				
Median time to receive surgery	53 days	49	37	45
90th percentile time to receive surgery	78 days	81	77	82
3 Non-urgent: ² 175 patients				
Median time to receive surgery	225 days	242	300	259
90th percentile time to receive surgery	345 days	351	371	351

Bowral and District Hospital: Time waited to receive elective surgery

October to December 2016

Median ⁵ waiting time (days) for patients who received elective surgery by specialty of surgeon		Same period last year	Peer group (this period)
Cardiothoracic surgery	n/a (0 patients)	n/a	n/a
Ear, nose and throat surgery	n/a (0 patients)	n/a	65
General surgery	31 days (107 patients)	35	43
Gynaecology	57 days (68 patients)	27	41
Medical	n/a (0 patients)	n/a	15
Neurosurgery	n/a (0 patients)	n/a	n/a
Ophthalmology	211 days (85 patients)	308	261
Orthopaedic surgery	300 days (96 patients)	281	151
Plastic surgery	n/a (0 patients)	n/a	63
Urology	n/a (0 patients)	n/a	38
Vascular surgery	n/a (0 patients)	n/a	41

Median ⁵ waiting time (days) for patients who received elective surgery by common procedures ⁷		Same period last year	Peer group (this period)
Abdominal hysterectomy	* (< 5 patients)	*	75
Cataract extraction	212 days (83 patients)	308	263
Cholecystectomy	49 days (21 patients)	57	49
Coronary artery bypass graft	n/a (0 patients)	n/a	n/a
Cystoscopy	* (< 5 patients)	*	32
Haemorrhoidectomy	n/a (0 patients)	*	60
Hysteroscopy	64 days (31 patients)	25	29
Inguinal herniorrhaphy	45 days (12 patients)	*	62
Myringoplasty / Tympanoplasty	n/a (0 patients)	n/a	*
Myringotomy	n/a (0 patients)	n/a	*
Other - General	* (6 patients)	*	27
Prostatectomy	n/a (0 patients)	n/a	80
Septoplasty	n/a (0 patients)	n/a	295
Tonsillectomy	n/a (0 patients)	n/a	75
Total hip replacement	314 days (22 patients)	321	215
Total knee replacement	330 days (28 patients)	314	276
Varicose veins stripping and ligation	n/a (0 patients)	n/a	54

Bowral and District Hospital: Elective surgery waiting list

October to December 2016

Patients ready for surgery on waiting list at start of quarter: 710 patients

Patients ready for surgery on waiting list at end of quarter: 740 patients

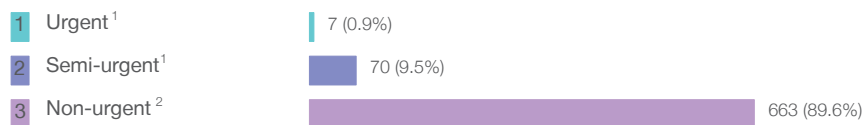
Patients not ready for surgery⁸ on waiting list at end of quarter: 74 patients

	Same period last year	Change since one year ago
Patients ready for surgery on waiting list at start of quarter	739	-3.9%
Patients ready for surgery on waiting list at end of quarter	814	-9.1%
Patients not ready for surgery ⁸ on waiting list at end of quarter	74	0.0%

Bowral and District Hospital: Patients ready for elective surgery

as at 31st December 2016

Patients ready for surgery on waiting list by urgency category: 740 patients



	Same period last year	Change since one year ago
Urgent ¹	< 5	*
Semi-urgent ¹	47	55.6%
Non-urgent ²	767	-13.6%

Bowral and District Hospital: Patients ready for elective surgery

as at 31st December 2016

Patients ready for elective surgery by specialty of surgeon: 740 patients

	As at 31 Dec 2016	Same time last year	Change since one year ago
All specialties	740	814	-9.1%
Cardiothoracic surgery	0	0	n/a
Ear, nose and throat surgery	0	0	n/a
General surgery	66	77	-14.3%
Gynaecology	70	57	22.8%
Medical	0	0	n/a
Neurosurgery	0	0	n/a
Ophthalmology	249	265	-6.0%
Orthopaedic surgery	355	415	-14.5%
Plastic surgery	0	0	n/a
Urology	0	0	n/a
Vascular surgery	0	0	n/a

Patients ready for elective surgery for common procedures⁷

	As at 31 Dec 2016	Same time last year	Change since one year ago
Abdominal hysterectomy	9	13	-30.8%
Cataract extraction	248	263	-5.7%
Cholecystectomy	6	14	-57.1%
Coronary artery bypass graft	0	< 5	n/a
Cystoscopy	< 5	< 5	*
Haemorrhoidectomy	< 5	< 5	n/a
Hysteroscopy	22	11	100.0%
Inguinal herniorrhaphy	10	14	-28.6%
Myringoplasty / Tympanoplasty	0	< 5	n/a
Myringotomy	0	< 5	n/a
Other - General	0	< 5	*
Prostatectomy	0	< 5	n/a
Septoplasty	0	< 5	n/a
Tonsillectomy	0	< 5	n/a
Total hip replacement	83	81	2.5%
Total knee replacement	135	168	-19.6%
Varicose veins stripping and ligation	0	< 5	n/a

Bowral and District Hospital: Patients ready for elective surgery as at 31st December 2016

Patients ready for elective surgery, on the waiting list for longer than 12 months

	As at 31 Dec 2016	Same time last year
All specialties	0	0

- * Suppressed due to small numbers and to protect privacy. Relevant graphs are also suppressed.
- < 5 Less than five patients. For measures by urgency category, counts are included in an adjacent category. Relevant graphs are also suppressed.
1. Excluding staged procedures.
 2. Excluding staged procedures and cystoscopy.
 3. Including non-urgent cystoscopy.
 4. Excludes the total number of days the patient was coded as 'not ready for surgery'.
 5. This is the number of days it took for half of patients who received elective surgery during the period to be admitted and receive their surgery. The other half took equal to or longer than the median to be admitted for surgery.
 6. This is the number of days it took for 90% of patients who received elective surgery during the period to be admitted and receive their surgery. The final 10% of patients took equal to or longer than the 90th percentile.
 7. The procedures included in this list are procedures which are high volume; some may be associated with long waiting periods. For a description of these procedures see *Elective Surgery Glossary of Common Procedures, December 2012*.
 8. Includes staged procedures, non-urgent cystoscopy, and patients currently not available for personal reasons.
- For more information: For details of methods, see the *Technical Supplement: Elective surgery measures, July to September 2016*.
- Note:** All percentages rounded to whole numbers and therefore percentages may not add to 100%.
- Source:** Waiting List Collection On-Line System, NSW Health (extracted 20 January 2017.).