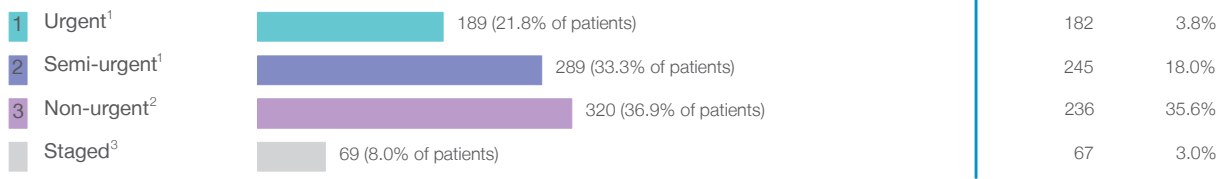


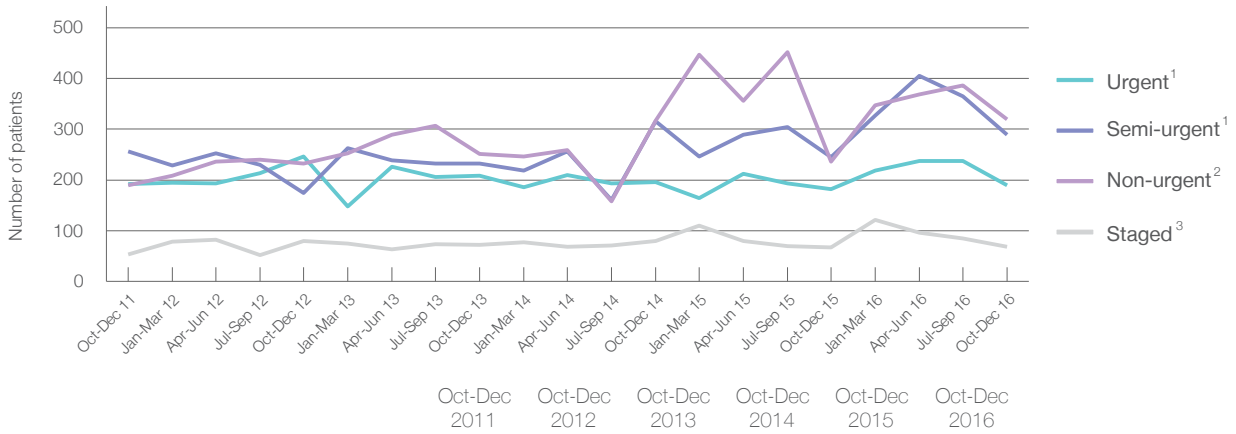
Port Macquarie Base Hospital: Elective surgery performed

October to December 2016

Patients who received elective surgery by urgency category: 867 patients



Patients who received elective surgery by urgency category by quarter, October 2011 to December 2016



Urgency Category	Oct-Dec 2011	Oct-Dec 2012	Oct-Dec 2013	Oct-Dec 2014	Oct-Dec 2015	Oct-Dec 2016
All categories	691	734	764	909	730	867
Urgent ¹	192	246	208	196	182	189
Semi-urgent ¹	256	175	233	316	245	289
Non-urgent ²	190	233	251	317	236	320
Staged ³	53	80	72	80	67	69

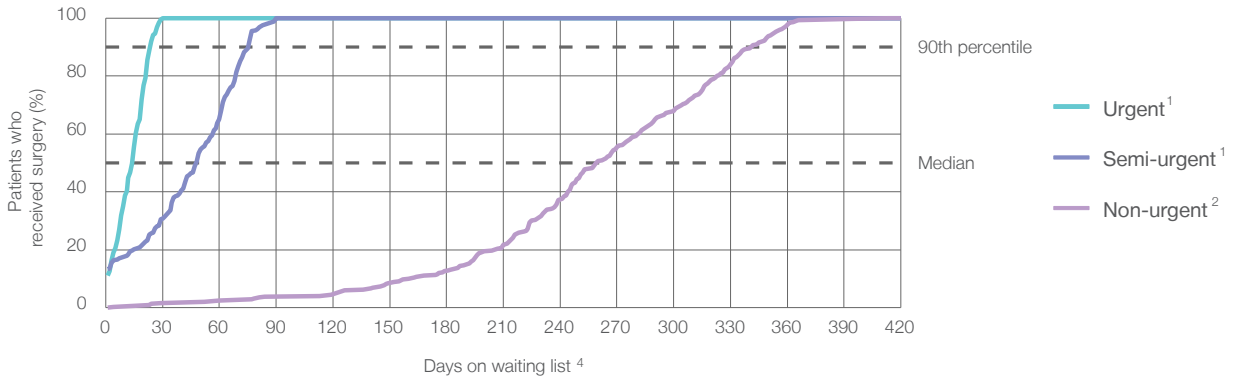
Port Macquarie Base Hospital: Time waited to receive elective surgery

October to December 2016

Percentage of patients who received surgery within the clinically recommended timeframe

Urgency Category	Recommended Timeframe	Percentage	Same period last year	Peer group (this period)
1 Urgent ¹	Recommended: 30 days	100%	100%	99.8%
2 Semi-urgent ¹	Recommended: 90 days	100%	100%	98.7%
3 Non-urgent ²	Recommended: 365 days	99.1%	98.3%	95.3%

Percentage of patients who received elective surgery by waiting time (days)



Waiting time (days) for people who received surgery by urgency category

Urgency Category	Median time to receive surgery	90th percentile time to receive surgery	Peer group (this period)	This hospital (same period last year)	Peer group (same period last year)
1 Urgent: ¹ 189 patients	15 days	24 days	13	14	13
2 Semi-urgent: ¹ 289 patients	48 days	76 days	47	48	49
3 Non-urgent: ² 320 patients	260 days	342 days	257	272	262

Port Macquarie Base Hospital: Time waited to receive elective surgery

October to December 2016

Median ⁵ waiting time (days) for patients who received elective surgery by specialty of surgeon		Same period last year	Peer group (this period)
Cardiothoracic surgery	n/a (0 patients)	n/a	*
Ear, nose and throat surgery	29 days (18 patients)	45	226
General surgery	27 days (185 patients)	22	47
Gynaecology	40 days (108 patients)	41	42
Medical	* (7 patients)	*	18
Neurosurgery	n/a (0 patients)	n/a	n/a
Ophthalmology	216 days (80 patients)	222	262
Orthopaedic surgery	253 days (202 patients)	265	216
Plastic surgery	n/a (0 patients)	n/a	61
Urology	48 days (186 patients)	53	35
Vascular surgery	16 days (81 patients)	22	22

Median ⁵ waiting time (days) for patients who received elective surgery by common procedures ⁷		Same period last year	Peer group (this period)
Abdominal hysterectomy	* (9 patients)	*	65
Cataract extraction	220 days (64 patients)	251	266
Cholecystectomy	35 days (33 patients)	34	56
Coronary artery bypass graft	n/a (0 patients)	n/a	n/a
Cystoscopy	22 days (46 patients)	48	30
Haemorrhoidectomy	* (< 5 patients)	*	56
Hysteroscopy	17 days (30 patients)	28	30
Inguinal herniorrhaphy	210 days (19 patients)	226	86
Myringoplasty / Tympanoplasty	n/a (0 patients)	n/a	274
Myringotomy	n/a (0 patients)	n/a	116
Other - General	* (6 patients)	*	28
Prostatectomy	65 days (35 patients)	63	58
Septoplasty	* (< 5 patients)	*	305
Tonsillectomy	n/a (0 patients)	60	262
Total hip replacement	244 days (19 patients)	266	241
Total knee replacement	281 days (65 patients)	282	303
Varicose veins stripping and ligation	* (< 5 patients)	n/a	141

Port Macquarie Base Hospital: Elective surgery waiting list

October to December 2016

Patients ready for surgery on waiting list at start of quarter: 1,369 patients

Patients ready for surgery on waiting list at end of quarter: 1,367 patients

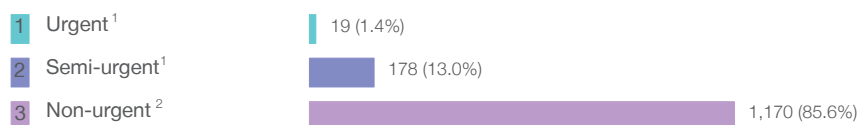
Patients not ready for surgery⁸ on waiting list at end of quarter: 314 patients

	Same period last year	Change since one year ago
Patients ready for surgery on waiting list at start of quarter	1,076	27.2%
Patients ready for surgery on waiting list at end of quarter	1,180	15.8%
Patients not ready for surgery ⁸ on waiting list at end of quarter	301	4.3%

Port Macquarie Base Hospital: Patients ready for elective surgery

as at 31st December 2016

Patients ready for surgery on waiting list by urgency category: 1,367 patients



	Same period last year	Change since one year ago
Urgent ¹	11	72.7%
Semi-urgent ¹	162	9.9%
Non-urgent ²	1,007	16.2%

Port Macquarie Base Hospital: Patients ready for elective surgery

as at 31st December 2016

Patients ready for elective surgery by specialty of surgeon: 1,367 patients

	As at 31 Dec 2016	Same time last year	Change since one year ago
All specialties	1,367	1,180	15.8%
Cardiothoracic surgery	0	0	n/a
Ear, nose and throat surgery	121	31	290.3%
General surgery	157	174	-9.8%
Gynaecology	121	132	-8.3%
Medical	< 5	5	*
Neurosurgery	0	0	n/a
Ophthalmology	134	183	-26.8%
Orthopaedic surgery	651	498	30.7%
Plastic surgery	0	0	n/a
Urology	165	137	20.4%
Vascular surgery	17	20	-15.0%

Patients ready for elective surgery for common procedures ⁷

	As at 31 Dec 2016	Same time last year	Change since one year ago
Abdominal hysterectomy	12	13	-7.7%
Cataract extraction	84	152	-44.7%
Cholecystectomy	27	24	12.5%
Coronary artery bypass graft	0	< 5	n/a
Cystoscopy	25	15	66.7%
Haemorrhoidectomy	< 5	< 5	*
Hysteroscopy	9	18	-50.0%
Inguinal herniorrhaphy	35	50	-30.0%
Myringoplasty / Tympanoplasty	< 5	< 5	n/a
Myringotomy	0	< 5	n/a
Other - General	5	< 5	*
Prostatectomy	43	52	-17.3%
Septoplasty	11	< 5	*
Tonsillectomy	84	18	366.7%
Total hip replacement	110	86	27.9%
Total knee replacement	237	184	28.8%
Varicose veins stripping and ligation	0	< 5	n/a

Port Macquarie Base Hospital: Patients ready for elective surgery
as at 31st December 2016

Patients ready for elective surgery, on the waiting list for longer than 12 months

As at 31 Dec 2016 Same time last year

	As at 31 Dec 2016	Same time last year
All specialties	< 5	< 5

* Suppressed due to small numbers and to protect privacy. Relevant graphs are also suppressed.

< 5 Less than five patients. For measures by urgency category, counts are included in an adjacent category. Relevant graphs are also suppressed.

1. Excluding staged procedures.
2. Excluding staged procedures and cystoscopy.
3. Including non-urgent cystoscopy.
4. Excludes the total number of days the patient was coded as 'not ready for surgery'.
5. This is the number of days it took for half of patients who received elective surgery during the period to be admitted and receive their surgery. The other half took equal to or longer than the median to be admitted for surgery.
6. This is the number of days it took for 90% of patients who received elective surgery during the period to be admitted and receive their surgery. The final 10% of patients took equal to or longer than the 90th percentile.
7. The procedures included in this list are procedures which are high volume; some may be associated with long waiting periods. For a description of these procedures see *Elective Surgery Glossary of Common Procedures, December 2012*.
8. Includes staged procedures, non-urgent cystoscopy, and patients currently not available for personal reasons.

For more information: For details of methods, see the *Technical Supplement: Elective surgery measures, July to September 2016*.

Note: All percentages rounded to whole numbers and therefore percentages may not add to 100%.

Source: Waiting List Collection On-Line System, NSW Health (extracted 20 January 2017.).