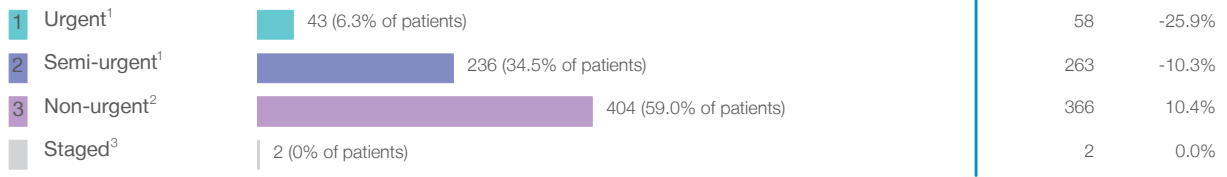


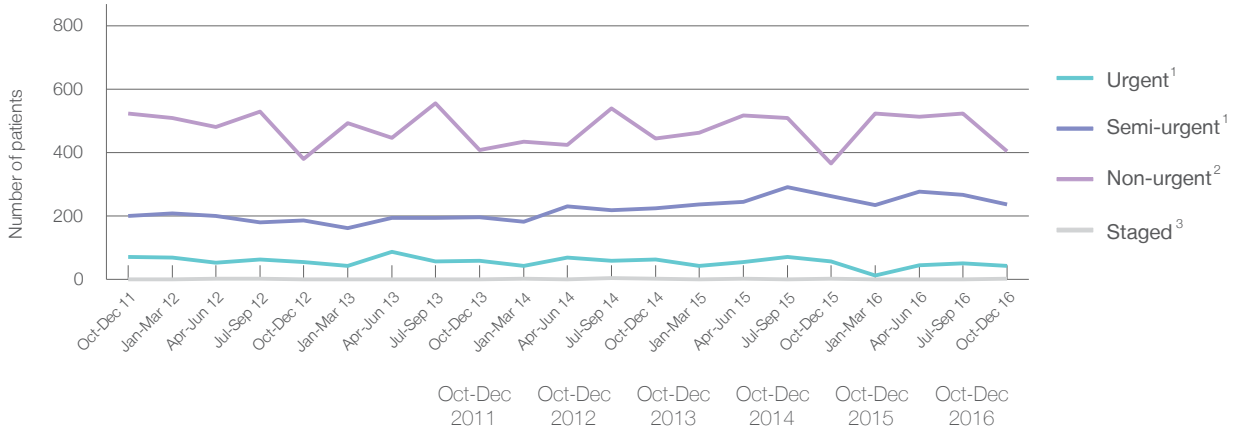
Shellharbour Hospital: Elective surgery performed

October to December 2016

Patients who received elective surgery by urgency category: 685 patients



Patients who received elective surgery by urgency category by quarter, October 2011 to December 2016



Urgency Category	Oct-Dec 2011	Oct-Dec 2012	Oct-Dec 2013	Oct-Dec 2014	Oct-Dec 2015	Oct-Dec 2016
All categories	797	623	666	737	689	685
Urgent ¹	72	56	60	64	58	43
Semi-urgent ¹	201	187	197	225	263	236
Non-urgent ²	524	379	408	445	366	404
Staged ³	0	1	1	3	2	2

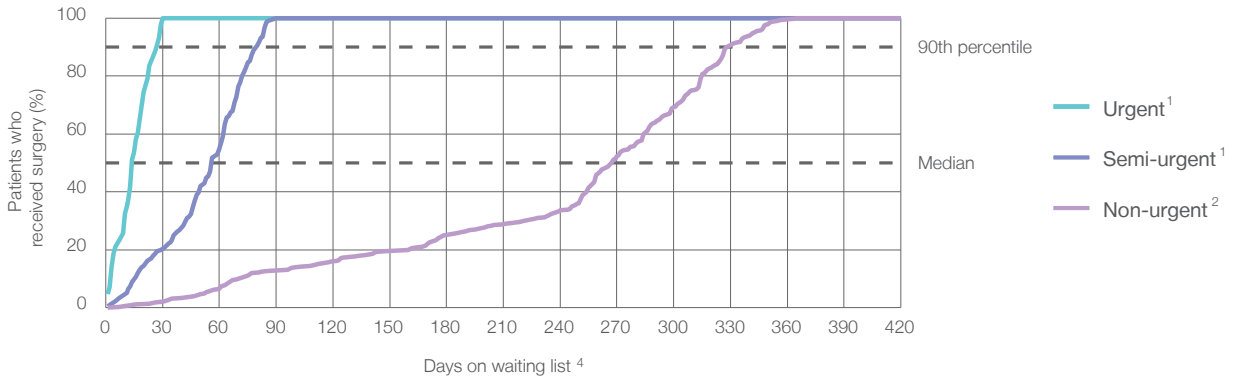
Shellharbour Hospital: Time waited to receive elective surgery

October to December 2016

Percentage of patients who received surgery within the clinically recommended timeframe

	Recommended:	100%	Same period last year	Peer group (this period)
1 Urgent ¹	30 days	100%	100%	99.8%
2 Semi-urgent ¹	90 days	100%	100%	99.4%
3 Non-urgent ²	365 days	100%	100%	98.7%

Percentage of patients who received elective surgery by waiting time (days)



Waiting time (days) for people who received surgery by urgency category

	Peer group (this period)	This hospital (same period last year)	Peer group (same period last year)
1 Urgent: ¹ 43 patients			
Median time to receive surgery	14	15	14
90th percentile time to receive surgery	27	*	27
2 Semi-urgent: ¹ 236 patients			
Median time to receive surgery	49	57	45
90th percentile time to receive surgery	81	82	82
3 Non-urgent: ² 404 patients			
Median time to receive surgery	242	281	259
90th percentile time to receive surgery	351	325	351

Shellharbour Hospital: Time waited to receive elective surgery

October to December 2016

Median ⁵ waiting time (days) for patients who received elective surgery by specialty of surgeon		Same period last year	Peer group (this period)
Cardiothoracic surgery	n/a (0 patients)	n/a	n/a
Ear, nose and throat surgery	n/a (0 patients)	n/a	65
General surgery	61 days (111 patients)	68	43
Gynaecology	53 days (119 patients)	59	41
Medical	* (< 5 patients)	n/a	15
Neurosurgery	n/a (0 patients)	n/a	n/a
Ophthalmology	280 days (304 patients)	281	261
Orthopaedic surgery	185 days (63 patients)	198	151
Plastic surgery	62 days (87 patients)	27	63
Urology	n/a (0 patients)	n/a	38
Vascular surgery	n/a (0 patients)	n/a	41

Median ⁵ waiting time (days) for patients who received elective surgery by common procedures ⁷		Same period last year	Peer group (this period)
Abdominal hysterectomy	* (< 5 patients)	*	75
Cataract extraction	278 days (288 patients)	282	263
Cholecystectomy	58 days (28 patients)	49	49
Coronary artery bypass graft	n/a (0 patients)	n/a	n/a
Cystoscopy	n/a (0 patients)	n/a	32
Haemorrhoidectomy	* (9 patients)	*	60
Hysteroscopy	49 days (52 patients)	54	29
Inguinal herniorrhaphy	72 days (38 patients)	71	62
Myringoplasty / Tympanoplasty	n/a (0 patients)	n/a	*
Myringotomy	n/a (0 patients)	n/a	*
Other - General	* (< 5 patients)	37	27
Prostatectomy	n/a (0 patients)	n/a	80
Septoplasty	n/a (0 patients)	n/a	295
Tonsillectomy	n/a (0 patients)	n/a	75
Total hip replacement	n/a (0 patients)	n/a	215
Total knee replacement	n/a (0 patients)	n/a	276
Varicose veins stripping and ligation	n/a (0 patients)	n/a	54

Shellharbour Hospital: Elective surgery waiting list

October to December 2016

Patients ready for surgery on waiting list at start of quarter: 1,647 patients

Patients ready for surgery on waiting list at end of quarter: 1,698 patients

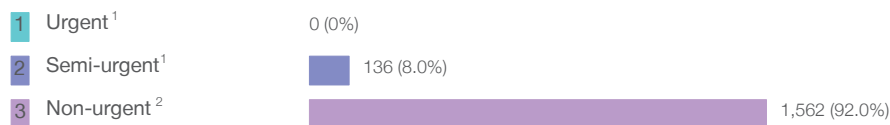
Patients not ready for surgery⁸ on waiting list at end of quarter: 75 patients

	Same period last year	Change since one year ago
Patients ready for surgery on waiting list at start of quarter	1,610	2.3%
Patients ready for surgery on waiting list at end of quarter	1,656	2.5%
Patients not ready for surgery ⁸ on waiting list at end of quarter	94	-20.2%

Shellharbour Hospital: Patients ready for elective surgery

as at 31st December 2016

Patients ready for surgery on waiting list by urgency category: 1,698 patients



	Same period last year	Change since one year ago
Urgent ¹	< 5	*
Semi-urgent ¹	165	-17.1%
Non-urgent ²	1,491	4.8%

Shellharbour Hospital: Patients ready for elective surgery

as at 31st December 2016

Patients ready for elective surgery by specialty of surgeon: 1,698 patients

	As at 31 Dec 2016	Same time last year	Change since one year ago
All specialties	1,698	1,656	2.5%
Cardiothoracic surgery	0	0	n/a
Ear, nose and throat surgery	0	0	n/a
General surgery	158	167	-5.4%
Gynaecology	146	152	-3.9%
Medical	0	0	n/a
Neurosurgery	0	0	n/a
Ophthalmology	1,128	1,099	2.6%
Orthopaedic surgery	223	212	5.2%
Plastic surgery	43	26	65.4%
Urology	0	0	n/a
Vascular surgery	0	0	n/a

Patients ready for elective surgery for common procedures ⁷

	As at 31 Dec 2016	Same time last year	Change since one year ago
Abdominal hysterectomy	6	< 5	*
Cataract extraction	1,073	1,036	3.6%
Cholecystectomy	20	22	-9.1%
Coronary artery bypass graft	0	< 5	n/a
Cystoscopy	0	< 5	n/a
Haemorrhoidectomy	5	16	-68.8%
Hysteroscopy	42	45	-6.7%
Inguinal herniorrhaphy	78	46	69.6%
Myringoplasty / Tympanoplasty	0	< 5	n/a
Myringotomy	0	< 5	n/a
Other - General	< 5	8	*
Prostatectomy	0	< 5	n/a
Septoplasty	0	< 5	n/a
Tonsillectomy	0	< 5	n/a
Total hip replacement	0	< 5	n/a
Total knee replacement	0	< 5	n/a
Varicose veins stripping and ligation	0	< 5	n/a

Shellharbour Hospital: Patients ready for elective surgery

as at 31st December 2016

Patients ready for elective surgery, on the waiting list for longer than 12 months

	As at 31 Dec 2016	Same time last year
All specialties	0	0

* Suppressed due to small numbers and to protect privacy. Relevant graphs are also suppressed.

< 5 Less than five patients. For measures by urgency category, counts are included in an adjacent category. Relevant graphs are also suppressed.

1. Excluding staged procedures.
2. Excluding staged procedures and cystoscopy.
3. Including non-urgent cystoscopy.
4. Excludes the total number of days the patient was coded as 'not ready for surgery'.
5. This is the number of days it took for half of patients who received elective surgery during the period to be admitted and receive their surgery. The other half took equal to or longer than the median to be admitted for surgery.
6. This is the number of days it took for 90% of patients who received elective surgery during the period to be admitted and receive their surgery. The final 10% of patients took equal to or longer than the 90th percentile.
7. The procedures included in this list are procedures which are high volume; some may be associated with long waiting periods. For a description of these procedures see *Elective Surgery Glossary of Common Procedures, December 2012*.
8. Includes staged procedures, non-urgent cystoscopy, and patients currently not available for personal reasons.

For more information: For details of methods, see the *Technical Supplement: Elective surgery measures, July to September 2016*.

Note: All percentages rounded to whole numbers and therefore percentages may not add to 100%.

Source: Waiting List Collection On-Line System, NSW Health (extracted 20 January 2017.).