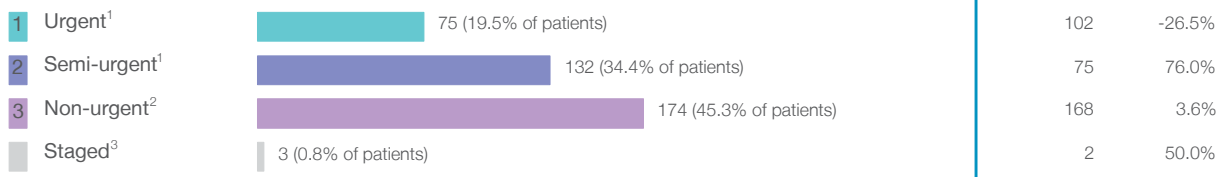


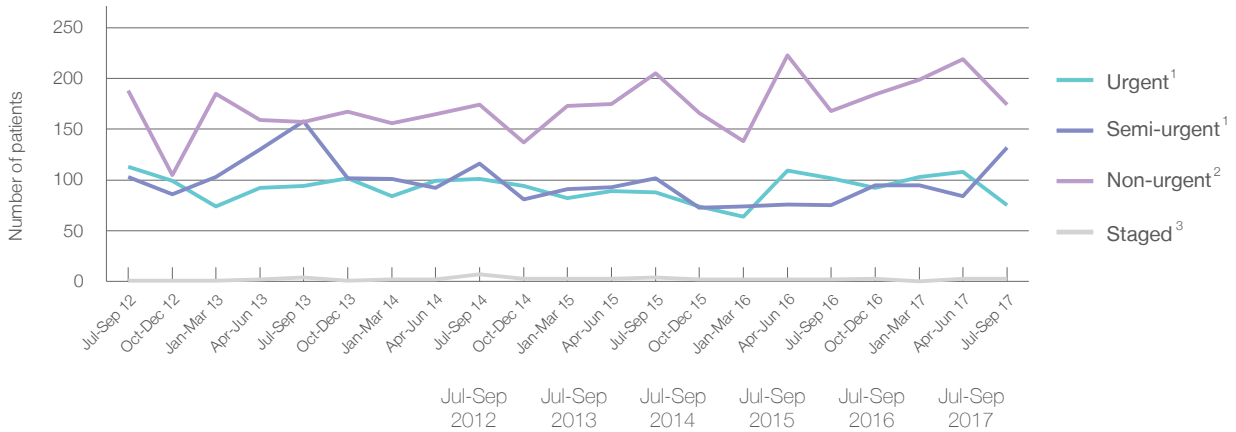
Goulburn Base Hospital: Elective surgery performed

July to September 2017

Patients who received elective surgery by urgency category: 384 patients



Patients who received elective surgery by urgency category by quarter, July 2012 to September 2017



	Jul-Sep 2012	Jul-Sep 2013	Jul-Sep 2014	Jul-Sep 2015	Jul-Sep 2016	Jul-Sep 2017
All categories	405	413	398	399	347	384
Urgent ¹	113	94	101	88	102	75
Semi-urgent ¹	103	158	116	102	75	132
Non-urgent ²	188	157	174	205	168	174
Staged ³	1	4	7	4	2	3

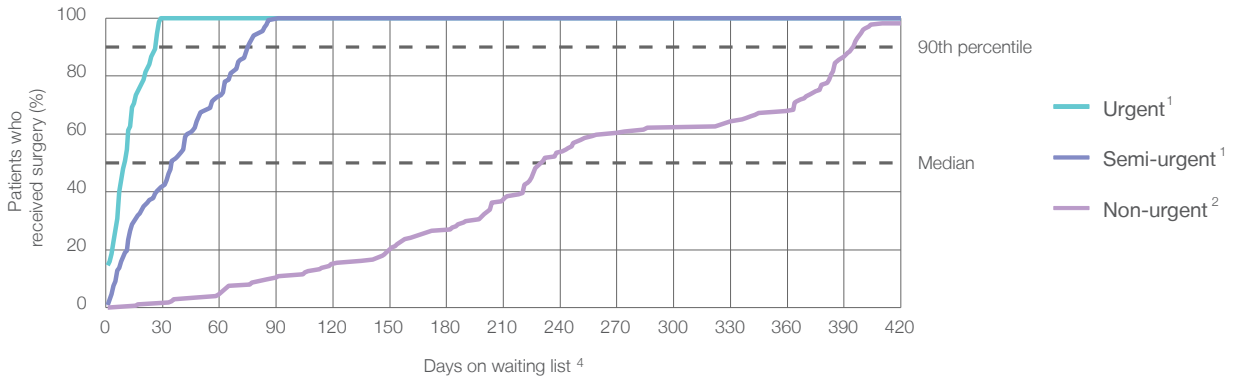
Goulburn Base Hospital: Time waited to receive elective surgery

July to September 2017

Percentage of patients who received surgery within the clinically recommended timeframe

	Recommended: (days)	Percentage	Same period last year	Peer group (this period)
1 Urgent ¹	30 days	100%	100%	99.9%
2 Semi-urgent ¹	90 days	99.2%	97.3%	99.3%
3 Non-urgent ²	365 days	71.3%	86.9%	96.7%

Percentage of patients who received elective surgery by waiting time (days)



Waiting time (days) for people who received surgery by urgency category

	Peer group (this period)	This hospital (same period last year)	Peer group (same period last year)
1 Urgent: ¹ 75 patients			
Median time to receive surgery	10 days	14	15
90th percentile time to receive surgery	*	27	27
2 Semi-urgent: ¹ 132 patients			
Median time to receive surgery	35 days	49	43
90th percentile time to receive surgery	75 days	83	*
3 Non-urgent: ² 174 patients			
Median time to receive surgery	231 days	269	280
90th percentile time to receive surgery	395 days	351	377

Goulburn Base Hospital: Time waited to receive elective surgery

July to September 2017

Median ⁵ waiting time (days) for patients who received elective surgery by specialty of surgeon		Same period last year	Peer group (this period)
Cardiothoracic surgery	n/a (0 patients)	n/a	n/a
Ear, nose and throat surgery	* (5 patients)	*	119
General surgery	50 days (157 patients)	48	47
Gynaecology	12 days (61 patients)	12	46
Medical	n/a (0 patients)	*	20
Neurosurgery	n/a (0 patients)	n/a	n/a
Ophthalmology	221 days (57 patients)	269	287
Orthopaedic surgery	364 days (104 patients)	343	159
Plastic surgery	n/a (0 patients)	n/a	57
Urology	n/a (0 patients)	n/a	34
Vascular surgery	n/a (0 patients)	n/a	88

Median ⁵ waiting time (days) for patients who received elective surgery by common procedures ⁷		Same period last year	Peer group (this period)
Abdominal hysterectomy	* (6 patients)	*	74
Cataract extraction	221 days (57 patients)	269	288
Cholecystectomy	61 days (17 patients)	148	52
Coronary artery bypass graft	n/a (0 patients)	n/a	n/a
Cystoscopy	* (5 patients)	*	34
Haemorrhoidectomy	* (< 5 patients)	*	61
Hysteroscopy	13 days (35 patients)	15	38
Inguinal herniorrhaphy	72 days (16 patients)	*	73
Myringoplasty / Tympanoplasty	n/a (0 patients)	n/a	*
Myringotomy	n/a (0 patients)	n/a	*
Other - General	18 days (18 patients)	24	27
Prostatectomy	n/a (0 patients)	n/a	41
Septoplasty	n/a (0 patients)	n/a	327
Tonsillectomy	* (5 patients)	*	209
Total hip replacement	383 days (20 patients)	335	220
Total knee replacement	384 days (32 patients)	359	264
Varicose veins stripping and ligation	* (5 patients)	*	110

Goulburn Base Hospital: Elective surgery waiting list

July to September 2017

Patients ready for surgery on waiting list at start of quarter: 642 patients

Patients ready for surgery on waiting list at end of quarter: 677 patients

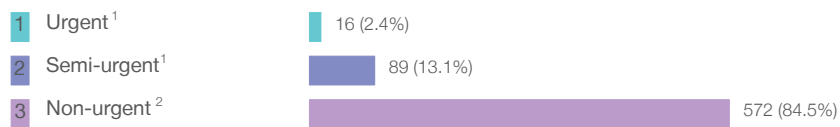
Patients not ready for surgery⁸ on waiting list at end of quarter: 49 patients

	Same period last year	Change since one year ago
Patients ready for surgery on waiting list at start of quarter	677	-5.2%
Patients ready for surgery on waiting list at end of quarter	653	3.7%
Patients not ready for surgery ⁸ on waiting list at end of quarter	37	32.4%

Goulburn Base Hospital: Patients ready for elective surgery

as at 30th September 2017

Patients ready for surgery on waiting list by urgency category: 677 patients



	Same period last year	Change since one year ago
Urgent ¹	8	100.0%
Semi-urgent ¹	55	61.8%
Non-urgent ²	590	-3.1%

Goulburn Base Hospital: Patients ready for elective surgery as at 30th September 2017

Patients ready for elective surgery by specialty of surgeon: 677 patients

	As at 30 Sep 2017	Same time last year	Change since one year ago
All specialties	677	653	3.7%
Cardiothoracic surgery	0	0	n/a
Ear, nose and throat surgery	0	0	n/a
General surgery	161	128	25.8%
Gynaecology	14	7	100.0%
Medical	0	0	n/a
Neurosurgery	0	0	n/a
Ophthalmology	149	179	-16.8%
Orthopaedic surgery	353	339	4.1%
Plastic surgery	0	0	n/a
Urology	0	0	n/a
Vascular surgery	0	0	n/a

Patients ready for elective surgery for common procedures⁷

	As at 30 Sep 2017	Same time last year	Change since one year ago
Abdominal hysterectomy	< 5	< 5	n/a
Cataract extraction	149	179	-16.8%
Cholecystectomy	21	16	31.3%
Coronary artery bypass graft	0	< 5	n/a
Cystoscopy	5	< 5	n/a
Haemorrhoidectomy	< 5	5	*
Hysteroscopy	6	< 5	*
Inguinal herniorrhaphy	28	17	64.7%
Myringoplasty / Tympanoplasty	0	< 5	n/a
Myringotomy	0	< 5	n/a
Other - General	11	19	-42.1%
Prostatectomy	< 5	< 5	n/a
Septoplasty	0	< 5	n/a
Tonsillectomy	9	14	-35.7%
Total hip replacement	89	71	25.4%
Total knee replacement	134	116	15.5%
Varicose veins stripping and ligation	7	< 5	*

Goulburn Base Hospital: Patients ready for elective surgery as at 30th September 2017

Patients ready for elective surgery, on the waiting list for longer than 12 months

As at 30 Sep 2017

Same time last year

All specialties	6	< 5
-----------------	---	-----

* Suppressed due to small numbers and to protect privacy. Relevant graphs are also suppressed.

< 5 Less than five patients. For measures by urgency category, counts are included in an adjacent category. Relevant graphs are also suppressed.

1. Excluding staged procedures.
2. Excluding staged procedures and cystoscopy.
3. Including non-urgent cystoscopy.
4. Excludes the total number of days the patient was coded as 'not ready for surgery'.
5. This is the number of days it took for half of patients who received elective surgery during the period to be admitted and receive their surgery. The other half took equal to or longer than the median to be admitted for surgery.
6. This is the number of days it took for 90% of patients who received elective surgery during the period to be admitted and receive their surgery. The final 10% of patients took equal to or longer than the 90th percentile.
7. The procedures included in this list are procedures which are high volume; some may be associated with long waiting periods. For a description of these procedures see *Elective Surgery Glossary of Common Procedures, December 2012*.
8. Includes staged procedures, non-urgent cystoscopy, and patients currently not available for personal reasons.

For more information: For details of methods, see the *Technical Supplement: Elective surgery measures, July to September 2016*.

Note: All percentages rounded to whole numbers and therefore percentages may not add to 100%.

Source: Waiting List Collection On-Line System, NSW Health (extracted 16 Oct 2017.).