



Hospital Quarterly

Performance Profiles

Elective Surgery

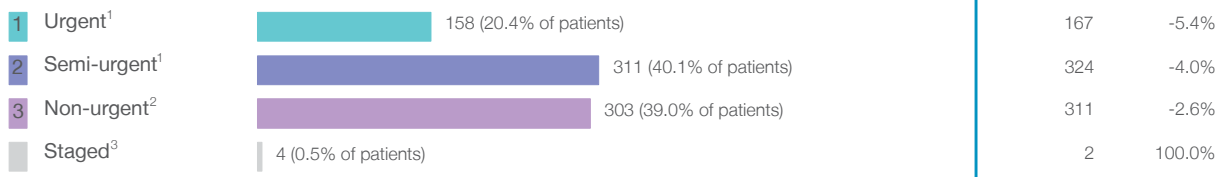
Sydney Children's Hospitals Network

October to December 2016

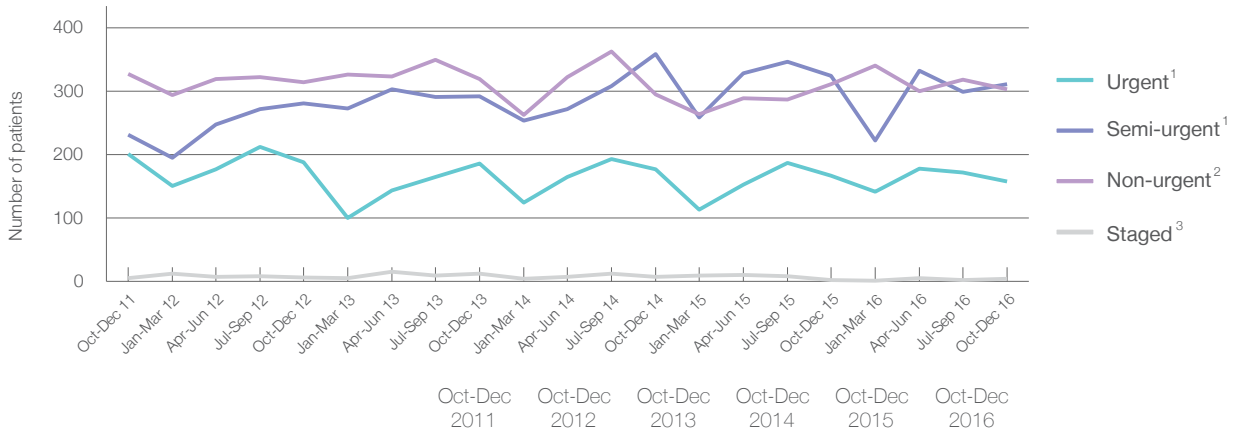
Sydney Children's Hospital: Elective surgery performed

October to December 2016

Patients who received elective surgery by urgency category: 776 patients



Patients who received elective surgery by urgency category by quarter, October 2011 to December 2016



Urgency Category	Oct-Dec 2011	Oct-Dec 2012	Oct-Dec 2013	Oct-Dec 2014	Oct-Dec 2015	Oct-Dec 2016
All categories	764	789	810	838	804	776
Urgent ¹	201	188	186	177	167	158
Semi-urgent ¹	231	281	292	358	324	311
Non-urgent ²	327	314	319	295	311	303
Staged ³	5	6	13	8	2	4

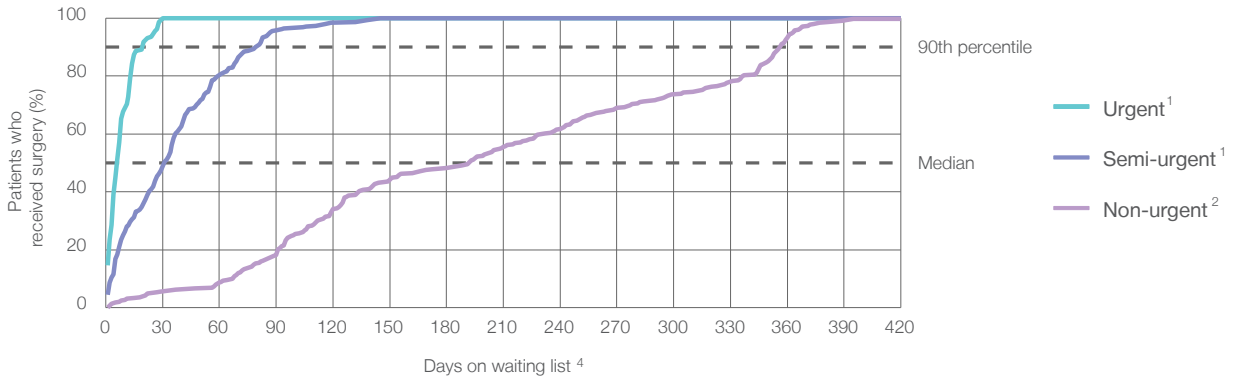
Sydney Children's Hospital: Time waited to receive elective surgery

October to December 2016

Percentage of patients who received surgery within the clinically recommended timeframe

	Recommended:		Same period last year	Peer group (this period)
1 Urgent ¹	30 days	100%	99.4%	100%
2 Semi-urgent ¹	90 days	95.8%	97.5%	96.4%
3 Non-urgent ²	365 days	95.7%	94.5%	91.8%

Percentage of patients who received elective surgery by waiting time (days)



Waiting time (days) for people who received surgery by urgency category

		Peer group (this period)	This hospital (same period last year)	Peer group (same period last year)
1 Urgent: ¹ 158 patients				
Median time to receive surgery	6 days	6	6	5
90th percentile time to receive surgery	20 days	20	21	22
2 Semi-urgent: ¹ 311 patients				
Median time to receive surgery	31 days	41	36	48
90th percentile time to receive surgery	79 days	83	73	99
3 Non-urgent: ² 303 patients				
Median time to receive surgery	192 days	176	148	172
90th percentile time to receive surgery	356 days	363	354	378

Sydney Children's Hospital: Time waited to receive elective surgery

October to December 2016

Median⁵ waiting time (days) for patients who received elective surgery by specialty of surgeon

		Same period last year	Peer group (this period)
Cardiothoracic surgery	11 days (10 patients)	11	40
Ear, nose and throat surgery	110 days (175 patients)	92	85
General surgery	26 days (269 patients)	23	29
Gynaecology	* (< 5 patients)	*	32
Medical	9 days (18 patients)	16	6
Neurosurgery	24 days (32 patients)	29	24
Ophthalmology	32 days (22 patients)	42	54
Orthopaedic surgery	49 days (90 patients)	61	63
Plastic surgery	125 days (70 patients)	79	57
Urology	30 days (88 patients)	32	31
Vascular surgery	n/a (0 patients)	n/a	n/a

Median⁵ waiting time (days) for patients who received elective surgery by common procedures⁷

		Same period last year	Peer group (this period)
Abdominal hysterectomy	n/a (0 patients)	n/a	n/a
Cataract extraction	* (< 5 patients)	*	*
Cholecystectomy	* (< 5 patients)	*	*
Coronary artery bypass graft	n/a (0 patients)	n/a	*
Cystoscopy	8 days (12 patients)	35	27
Haemorrhoidectomy	n/a (0 patients)	n/a	n/a
Hysteroscopy	n/a (0 patients)	n/a	n/a
Inguinal herniorrhaphy	15 days (40 patients)	11	14
Myringoplasty / Tympanoplasty	n/a (0 patients)	n/a	*
Myringotomy	n/a (0 patients)	n/a	*
Other - General	32 days (122 patients)	35	35
Prostatectomy	n/a (0 patients)	n/a	n/a
Septoplasty	n/a (0 patients)	*	*
Tonsillectomy	237 days (93 patients)	124	217
Total hip replacement	n/a (0 patients)	*	n/a
Total knee replacement	n/a (0 patients)	n/a	n/a
Varicose veins stripping and ligation	n/a (0 patients)	n/a	n/a

Sydney Children's Hospital: Elective surgery waiting list

October to December 2016

Patients ready for surgery on waiting list at start of quarter: 1,017 patients

Patients ready for surgery on waiting list at end of quarter: 1,017 patients

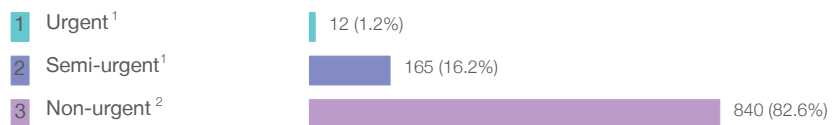
Patients not ready for surgery⁸ on waiting list at end of quarter: 219 patients

	Same period last year	Change since one year ago
Patients ready for surgery on waiting list at start of quarter	1,013	0.4%
Patients ready for surgery on waiting list at end of quarter	995	2.2%
Patients not ready for surgery ⁸ on waiting list at end of quarter	145	51.0%

Sydney Children's Hospital: Patients ready for elective surgery

as at 31st December 2016

Patients ready for surgery on waiting list by urgency category: 1,017 patients



	Same period last year	Change since one year ago
Urgent ¹	8	50.0%
Semi-urgent ¹	156	5.8%
Non-urgent ²	831	1.1%

Sydney Children's Hospital: Patients ready for elective surgery

as at 31st December 2016

Patients ready for elective surgery by specialty of surgeon: 1,017 patients

	As at 31 Dec 2016	Same time last year	Change since one year ago
All specialties	1,017	995	2.2%
Cardiothoracic surgery	0	< 5	*
Ear, nose and throat surgery	394	464	-15.1%
General surgery	237	194	22.2%
Gynaecology	0	< 5	*
Medical	< 5	6	*
Neurosurgery	16	22	-27.3%
Ophthalmology	53	50	6.0%
Orthopaedic surgery	130	98	32.7%
Plastic surgery	126	122	3.3%
Urology	57	35	62.9%
Vascular surgery	0	0	n/a

Patients ready for elective surgery for common procedures ⁷

	As at 31 Dec 2016	Same time last year	Change since one year ago
Abdominal hysterectomy	0	< 5	n/a
Cataract extraction	< 5	< 5	*
Cholecystectomy	< 5	< 5	*
Coronary artery bypass graft	0	< 5	n/a
Cystoscopy	6	15	-60.0%
Haemorrhoidectomy	0	< 5	n/a
Hysteroscopy	0	< 5	n/a
Inguinal herniorrhaphy	11	11	0.0%
Myringoplasty / Tympanoplasty	5	< 5	*
Myringotomy	0	< 5	n/a
Other - General	101	78	29.5%
Prostatectomy	0	< 5	n/a
Septoplasty	0	< 5	n/a
Tonsillectomy	238	261	-8.8%
Total hip replacement	< 5	< 5	*
Total knee replacement	0	< 5	n/a
Varicose veins stripping and ligation	0	< 5	n/a

Sydney Children's Hospital: Patients ready for elective surgery

as at 31st December 2016

Patients ready for elective surgery, on the waiting list for longer than 12 months

As at 31 Dec 2016

Same time last year

	As at 31 Dec 2016	Same time last year
All specialties	7	< 5

* Suppressed due to small numbers and to protect privacy. Relevant graphs are also suppressed.

< 5 Less than five patients. For measures by urgency category, counts are included in an adjacent category. Relevant graphs are also suppressed.

1. Excluding staged procedures.
2. Excluding staged procedures and cystoscopy.
3. Including non-urgent cystoscopy.
4. Excludes the total number of days the patient was coded as 'not ready for surgery'.
5. This is the number of days it took for half of patients who received elective surgery during the period to be admitted and receive their surgery. The other half took equal to or longer than the median to be admitted for surgery.
6. This is the number of days it took for 90% of patients who received elective surgery during the period to be admitted and receive their surgery. The final 10% of patients took equal to or longer than the 90th percentile.
7. The procedures included in this list are procedures which are high volume; some may be associated with long waiting periods. For a description of these procedures see *Elective Surgery Glossary of Common Procedures, December 2012*.
8. Includes staged procedures, non-urgent cystoscopy, and patients currently not available for personal reasons.

For more information: For details of methods, see the *Technical Supplement: Elective surgery measures, July to September 2016*.

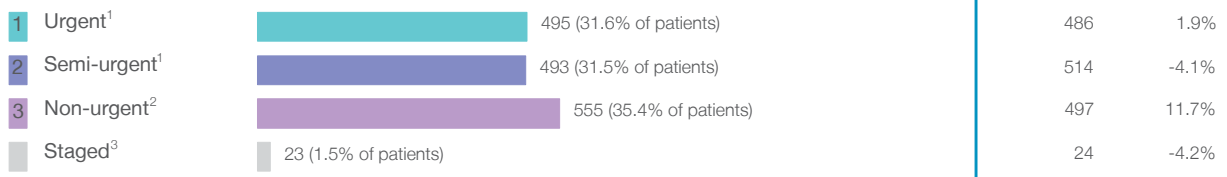
Note: All percentages rounded to whole numbers and therefore percentages may not add to 100%.

Source: Waiting List Collection On-Line System, NSW Health (extracted 20 January 2017.).

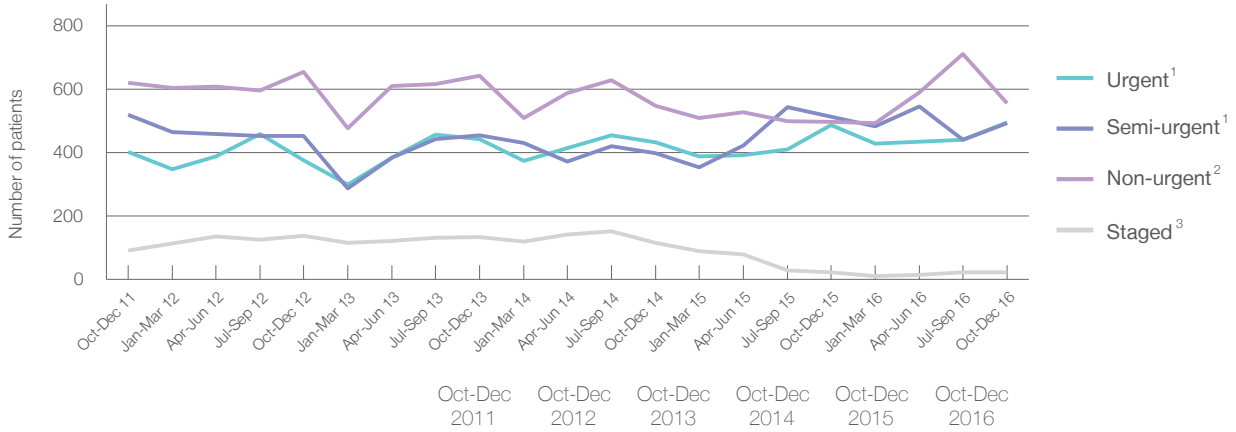
The Children's Hospital at Westmead: Elective surgery performed

October to December 2016

Patients who received elective surgery by urgency category: 1,566 patients



Patients who received elective surgery by urgency category by quarter, October 2011 to December 2016



Urgency Category	Oct-Dec 2011	Oct-Dec 2012	Oct-Dec 2013	Oct-Dec 2014	Oct-Dec 2015	Oct-Dec 2016
All categories	1,634	1,620	1,672	1,494	1,521	1,566
Urgent ¹	402	375	442	433	486	495
Semi-urgent ¹	520	453	454	398	514	493
Non-urgent ²	620	655	642	548	497	555
Staged ³	92	137	134	115	24	23

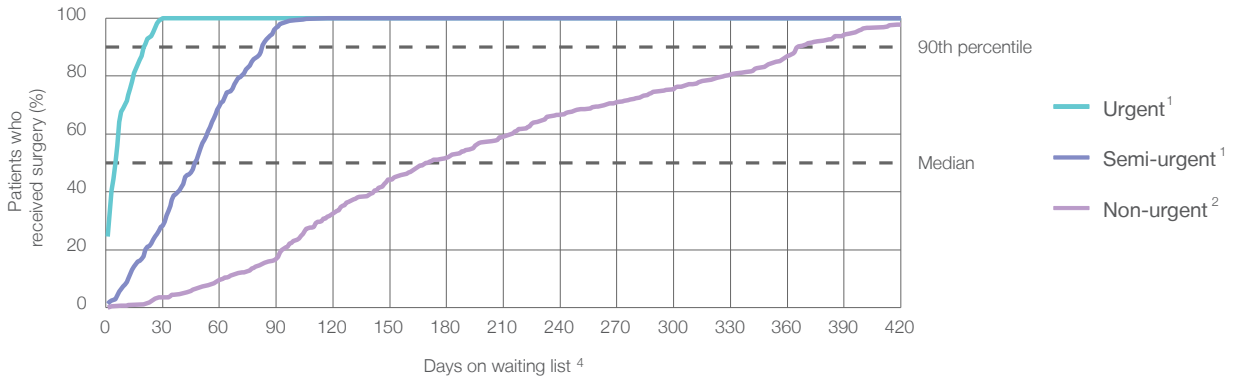
The Children's Hospital at Westmead: Time waited to receive elective surgery

October to December 2016

Percentage of patients who received surgery within the clinically recommended timeframe

	Recommended: (days)	Percentage	Same period last year	Peer group (this period)
1 Urgent ¹	30 days	100%	99.8%	100%
2 Semi-urgent ¹	90 days	96.8%	79.8%	96.4%
3 Non-urgent ²	365 days	89.7%	80.7%	91.8%

Percentage of patients who received elective surgery by waiting time (days)



Waiting time (days) for people who received surgery by urgency category

	Waiting time (days)	Peer group (this period)	This hospital (same period last year)	Peer group (same period last year)
1 Urgent: ¹ 495 patients	Median time to receive surgery	6	5	5
	90th percentile time to receive surgery	21	22	22
2 Semi-urgent: ¹ 493 patients	Median time to receive surgery	41	59	48
	90th percentile time to receive surgery	83	115	99
3 Non-urgent: ² 555 patients	Median time to receive surgery	176	191	172
	90th percentile time to receive surgery	363	406	378

The Children's Hospital at Westmead: Time waited to receive elective surgery

October to December 2016

Specialty	Median ⁵ waiting time (days) for patients who received elective surgery by specialty of surgeon	Same period last year	Peer group (this period)
Cardiothoracic surgery	45 days (77 patients)	45	40
Ear, nose and throat surgery	83 days (211 patients)	86	85
General surgery	31 days (502 patients)	20	29
Gynaecology	46 days (15 patients)	16	32
Medical	6 days (60 patients)	8	6
Neurosurgery	24 days (33 patients)	21	24
Ophthalmology	58 days (150 patients)	85	54
Orthopaedic surgery	63 days (306 patients)	44	63
Plastic surgery	25 days (165 patients)	54	57
Urology	49 days (47 patients)	54	31
Vascular surgery	n/a (0 patients)	n/a	n/a

Procedure	Median ⁵ waiting time (days) for patients who received elective surgery by common procedures ⁷	Same period last year	Peer group (this period)
Abdominal hysterectomy	n/a (0 patients)	n/a	n/a
Cataract extraction	* (5 patients)	56	*
Cholecystectomy	* (5 patients)	*	*
Coronary artery bypass graft	* (< 5 patients)	n/a	*
Cystoscopy	31 days (28 patients)	44	27
Haemorrhoidectomy	n/a (0 patients)	n/a	n/a
Hysteroscopy	n/a (0 patients)	n/a	n/a
Inguinal herniorrhaphy	13 days (75 patients)	18	14
Myringoplasty / Tympanoplasty	* (5 patients)	*	*
Myringotomy	* (< 5 patients)	*	*
Other - General	39 days (156 patients)	8	35
Prostatectomy	n/a (0 patients)	n/a	n/a
Septoplasty	* (< 5 patients)	*	*
Tonsillectomy	207 days (62 patients)	96	217
Total hip replacement	n/a (0 patients)	n/a	n/a
Total knee replacement	n/a (0 patients)	n/a	n/a
Varicose veins stripping and ligation	n/a (0 patients)	n/a	n/a

The Children's Hospital at Westmead: Elective surgery waiting list

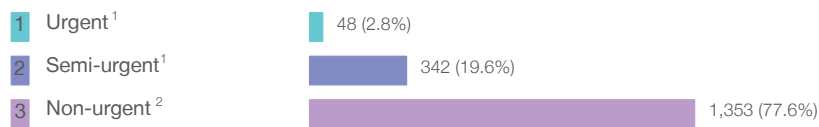
October to December 2016

	Same period last year	Change since one year ago
Patients ready for surgery on waiting list at start of quarter: 1,745 patients	2,104	-17.1%
Patients ready for surgery on waiting list at end of quarter: 1,743 patients	1,998	-12.8%
Patients not ready for surgery ⁸ on waiting list at end of quarter: 369 patients	365	1.1%

The Children's Hospital at Westmead: Patients ready for elective surgery

as at 31st December 2016

Patients ready for surgery on waiting list by urgency category: 1,743 patients



	Same period last year	Change since one year ago
Urgent ¹	22	118.2%
Semi-urgent ¹	397	-13.9%
Non-urgent ²	1,579	-14.3%

The Children's Hospital at Westmead: Patients ready for elective surgery

as at 31st December 2016

Patients ready for elective surgery by specialty of surgeon: 1,743 patients

	As at 31 Dec 2016	Same time last year	Change since one year ago
All specialties	1,743	1,998	-12.8%
Cardiothoracic surgery	41	53	-22.6%
Ear, nose and throat surgery	402	480	-16.3%
General surgery	413	477	-13.4%
Gynaecology	7	7	0.0%
Medical	21	< 5	*
Neurosurgery	11	5	120.0%
Ophthalmology	279	265	5.3%
Orthopaedic surgery	337	392	-14.0%
Plastic surgery	201	246	-18.3%
Urology	31	70	-55.7%
Vascular surgery	0	0	n/a

Patients ready for elective surgery for common procedures ⁷

	As at 31 Dec 2016	Same time last year	Change since one year ago
Abdominal hysterectomy	< 5	< 5	n/a
Cataract extraction	< 5	9	*
Cholecystectomy	< 5	< 5	*
Coronary artery bypass graft	0	< 5	n/a
Cystoscopy	10	< 5	*
Haemorrhoidectomy	0	< 5	n/a
Hysteroscopy	0	< 5	n/a
Inguinal herniorrhaphy	23	27	-14.8%
Myringoplasty / Tympanoplasty	10	11	-9.1%
Myringotomy	19	< 5	*
Other - General	84	129	-34.9%
Prostatectomy	0	< 5	n/a
Septoplasty	8	< 5	*
Tonsillectomy	113	180	-37.2%
Total hip replacement	0	< 5	n/a
Total knee replacement	0	< 5	n/a
Varicose veins stripping and ligation	0	< 5	n/a

The Children's Hospital at Westmead: Patients ready for elective surgery

as at 31st December 2016

Patients ready for elective surgery, on the waiting list for longer than 12 months

	As at 31 Dec 2016	Same time last year
All specialties	10	75

* Suppressed due to small numbers and to protect privacy. Relevant graphs are also suppressed.

< 5 Less than five patients. For measures by urgency category, counts are included in an adjacent category. Relevant graphs are also suppressed.

1. Excluding staged procedures.
2. Excluding staged procedures and cystoscopy.
3. Including non-urgent cystoscopy.
4. Excludes the total number of days the patient was coded as 'not ready for surgery'.
5. This is the number of days it took for half of patients who received elective surgery during the period to be admitted and receive their surgery. The other half took equal to or longer than the median to be admitted for surgery.
6. This is the number of days it took for 90% of patients who received elective surgery during the period to be admitted and receive their surgery. The final 10% of patients took equal to or longer than the 90th percentile.
7. The procedures included in this list are procedures which are high volume; some may be associated with long waiting periods. For a description of these procedures see *Elective Surgery Glossary of Common Procedures, December 2012*.
8. Includes staged procedures, non-urgent cystoscopy, and patients currently not available for personal reasons.

For more information: For details of methods, see the *Technical Supplement: Elective surgery measures, July to September 2016*.

Note: All percentages rounded to whole numbers and therefore percentages may not add to 100%.

Source: Waiting List Collection On-Line System, NSW Health (extracted 20 January 2017.).