

From March 2017, Hospital Quarterly reports the 90th percentile time, rather than the 95th percentile time, for related ED measures.

Fairfield Hospital: Emergency department (ED) overview

October to December 2016

All presentations:¹ 8,930 patients
Emergency presentations:² 8,901 patients

Same period last year	Change since one year ago
8,788	1.6%
8,765	1.6%

Fairfield Hospital: Time patients waited to start treatment³

October to December 2016

Triage 2 Emergency (e.g. chest pain, severe burns): 759 patients

Median time to start treatment⁴ 10 minutes
90th percentile time to start treatment⁵ 24 minutes

Triage 3 Urgent (e.g. moderate blood loss, dehydration): 3,191 patients

Median time to start treatment⁴ 20 minutes
90th percentile time to start treatment⁵ 70 minutes

Triage 4 Semi-urgent (e.g. sprained ankle, earache): 4,231 patients

Median time to start treatment⁴ 23 minutes
90th percentile time to start treatment⁵ 116 minutes

Triage 5 Non-urgent (e.g. small cuts or abrasions): 703 patients

Median time to start treatment⁴ 21 minutes
90th percentile time to start treatment⁵ 120 minutes

Same period last year	NSW (this period)
727	
10 minutes	8 minutes
28 minutes	26 minutes
2,893	
22 minutes	20 minutes
82 minutes	67 minutes
4,374	
27 minutes	25 minutes
129 minutes	97 minutes
756	
30 minutes	24 minutes
129 minutes	103 minutes

Fairfield Hospital: Time from presentation until leaving the ED

October to December 2016

Attendances used to calculate time to leaving the ED:⁶ 8,930 patients

Percentage of patients who spent four hours or less in the ED 79.7%

Same period last year	Change since one year ago
8,788	1.6%
81.6%	

* Suppressed due to small number of patients and to protect privacy. Relevant graphs are also suppressed.

1. All emergency and non-emergency attendances at the emergency department (ED).
2. All attendances that have a triage category and are coded as emergency presentations or unplanned return visits.
3. Some patients are excluded from ED time measures due to calculation requirements. For details, see the *Technical Supplement: Emergency department measures, January to March 2016*.
4. The median is the time by which half of patients started treatment. The other half of patients waited equal to or longer than this time.
5. The 90th percentile is the time by which 90% of patients started treatment. The final 10% of patients waited equal to or longer than this time.
6. All presentations that have a departure time.

Note: Presentation time is the earlier time recorded for clerical registration or the triage process. Treatment time is the earliest time recorded when a healthcare professional provides medical care relevant to the patient's presenting problems.

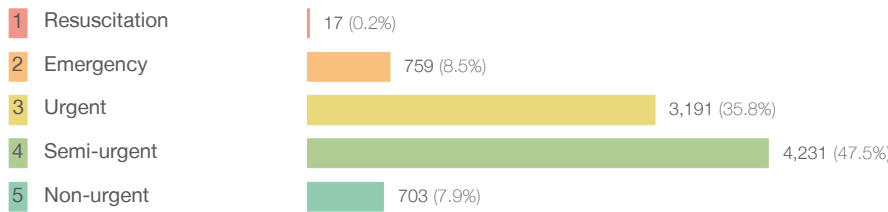
Source: Health Information Exchange, NSW Health (extracted 24 January 2017).

From March 2017, Hospital Quarterly reports the 90th percentile time, rather than the 95th percentile time, for related ED measures.

Fairfield Hospital: Patients presenting to the emergency department October to December 2016

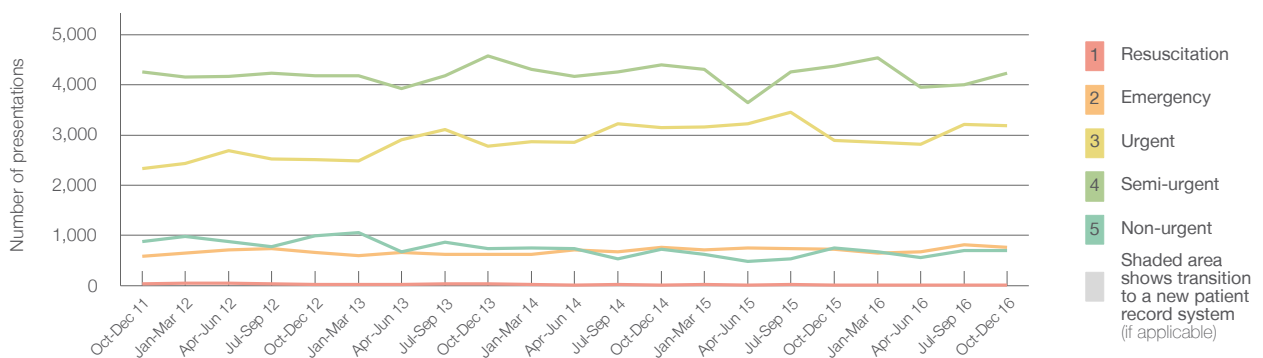
All presentations:¹ 8,930 patients

Emergency presentations² by triage category: 8,901 patients



Same period last year	Change since one year ago
8,788	1.6%
8,765	1.6%
15	13.3%
727	4.4%
2,893	10.3%
4,374	-3.3%
756	-7.0%

Emergency presentations² by quarter, October 2011 to December 2016 †



	Oct-Dec 2011	Oct-Dec 2012	Oct-Dec 2013	Oct-Dec 2014	Oct-Dec 2015	Oct-Dec 2016
Resuscitation	39	25	36	17	15	17
Emergency	591	658	627	764	727	759
Urgent	2,332	2,504	2,782	3,147	2,893	3,191
Semi-urgent	4,257	4,175	4,581	4,403	4,374	4,231
Non-urgent	876	997	741	723	756	703
All emergency presentations	8,095	8,359	8,767	9,054	8,765	8,901

Fairfield Hospital: Patients arriving by ambulance October to December 2016

Arrivals used to calculate transfer of care time:⁷ 1,297 patients

ED Transfer of care time



Same period last year	Change since one year ago
1,224	
12 minutes	0 minutes
31 minutes	-3 minutes

(†) Data points are not shown in graphs for quarters when patient numbers are too small.

(‡) Caution is advised when interpreting abrupt changes over time at the hospital level. For example, performance before and after trans For more information, see Background Paper: Approaches to reporting time measures of emergency department performance, December 2011.

From March 2017, Hospital Quarterly reports the 90th percentile time, rather than the 95th percentile time, for related ED measures.

Fairfield Hospital: Time patients waited to start treatment, triage 2 October to December 2016

Triage 2 Emergency (e.g. chest pain, severe burns)

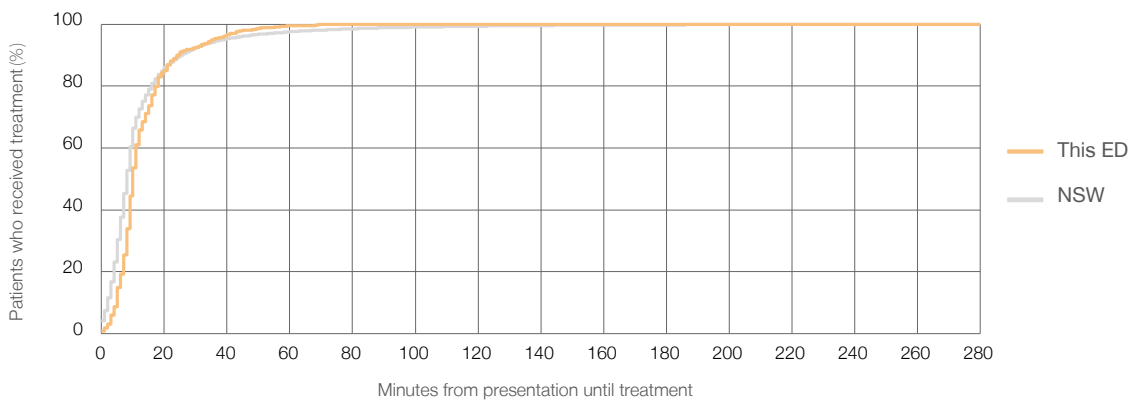
Number of triage 2 patients: 759

Number of triage 2 patients used to calculate waiting time:³ 753

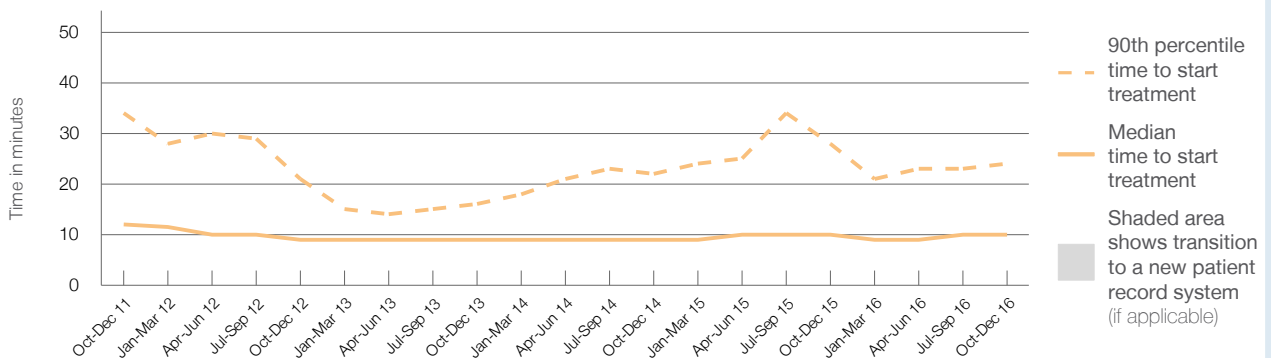
Median time to start treatment⁴ ■ 10 minutes
90th percentile time to start treatment⁵ ■ 24 minutes

Same period last year	NSW (this period)
727	727
10 minutes	8 minutes
28 minutes	26 minutes

Percentage of triage 2 patients who received treatment by time, October to December 2016



Time patients waited to start treatment (minutes) for triage 2 patients, October 2011 to December 2016^{†‡}



	Oct-Dec 2011	Oct-Dec 2012	Oct-Dec 2013	Oct-Dec 2014	Oct-Dec 2015	Oct-Dec 2016
Median time to start treatment ⁴ (minutes)	12	9	9	9	10	10
90th percentile time to start treatment ⁵ (minutes)	34	21	16	22	28	24

(†) Data points are not shown in graphs for quarters when patient numbers are too small.

(‡) Caution is advised when interpreting abrupt changes over time at the hospital level. For example, performance before and after trans For more information, see Background Paper: Approaches to reporting time measures of emergency department performance, December 2011.

From March 2017, Hospital Quarterly reports the 90th percentile time, rather than the 95th percentile time, for related ED measures.

Fairfield Hospital: Time patients waited to start treatment, triage 3 October to December 2016

Triage 3 Urgent (e.g. moderate blood loss, dehydration)

Number of triage 3 patients: 3,191

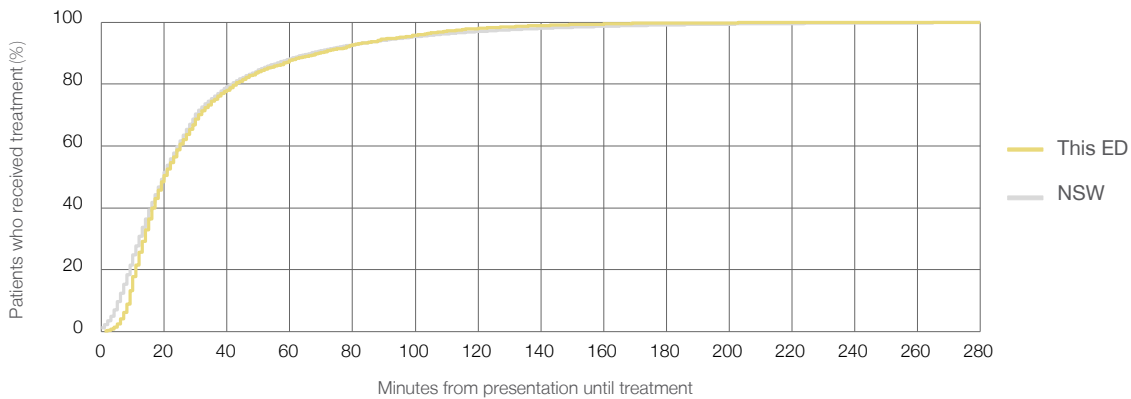
Number of triage 3 patients used to calculate waiting time:³ 3,118

Median time to start treatment⁴ 20 minutes

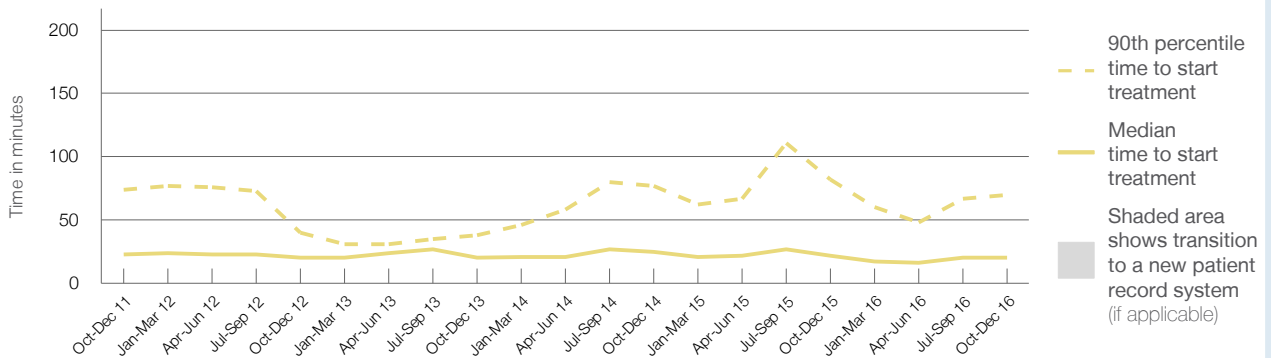
90th percentile time to start treatment⁵ 70 minutes

Same period last year	NSW (this period)
2,893	
2,802	
22 minutes	20 minutes
82 minutes	67 minutes

Percentage of triage 3 patients who received treatment by time, October to December 2016



Time patients waited to start treatment (minutes) for triage 3 patients, October 2011 to December 2016^{†‡}



	Oct-Dec 2011	Oct-Dec 2012	Oct-Dec 2013	Oct-Dec 2014	Oct-Dec 2015	Oct-Dec 2016
Median time to start treatment ⁴ (minutes)	23	20	20	25	22	20
90th percentile time to start treatment ⁵ (minutes)	74	40	38	77	82	70

(†) Data points are not shown in graphs for quarters when patient numbers are too small.

(‡) Caution is advised when interpreting abrupt changes over time at the hospital level. For example, performance before and after trans For more information, see Background Paper: Approaches to reporting time measures of emergency department performance, December 2011.

From March 2017, Hospital Quarterly reports the 90th percentile time, rather than the 95th percentile time, for related ED measures.

Fairfield Hospital: Time patients waited to start treatment, triage 4 October to December 2016

Triage 4 Semi-urgent (e.g. sprained ankle, earache)

Number of triage 4 patients: 4,231

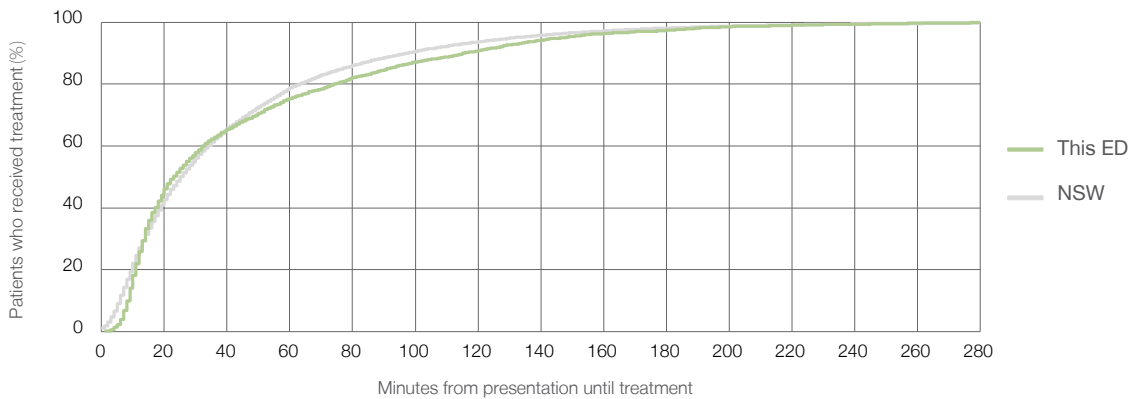
Number of triage 4 patients used to calculate waiting time:³ 3,813

Median time to start treatment⁴ 23 minutes

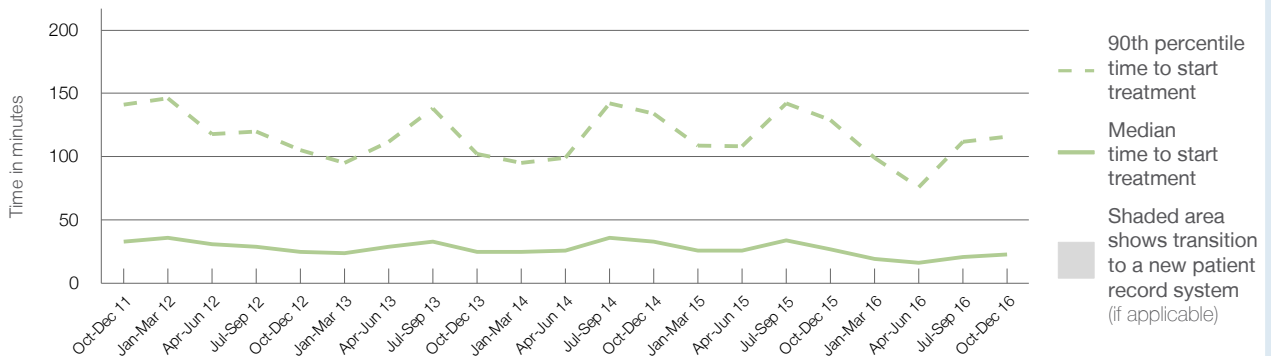
90th percentile time to start treatment⁵ 116 minutes

Same period last year	NSW (this period)
4,374	
3,971	
27 minutes	25 minutes
129 minutes	97 minutes

Percentage of triage 4 patients who received treatment by time, October to December 2016



Time patients waited to start treatment (minutes) for triage 4 patients, October 2011 to December 2016^{†‡}



	Oct-Dec 2011	Oct-Dec 2012	Oct-Dec 2013	Oct-Dec 2014	Oct-Dec 2015	Oct-Dec 2016
Median time to start treatment ⁴ (minutes)	33	25	25	33	27	23
90th percentile time to start treatment ⁵ (minutes)	141	105	102	134	129	116

(†) Data points are not shown in graphs for quarters when patient numbers are too small.

(‡) Caution is advised when interpreting abrupt changes over time at the hospital level. For example, performance before and after trans For more information, see Background Paper: Approaches to reporting time measures of emergency department performance, December 2011.

From March 2017, Hospital Quarterly reports the 90th percentile time, rather than the 95th percentile time, for related ED measures.

Fairfield Hospital: Time patients waited to start treatment, triage 5 October to December 2016

Triage 5 Non-urgent (e.g. small cuts or abrasions)

Number of triage 5 patients: 703

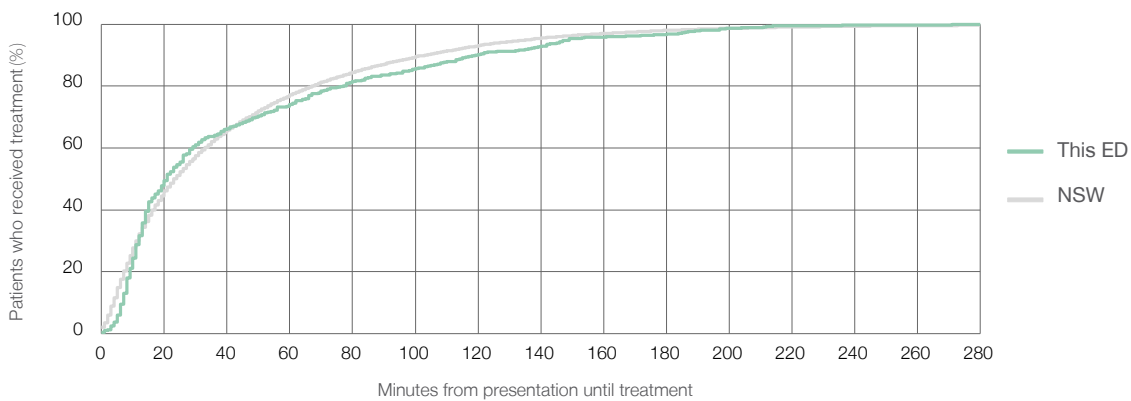
Number of triage 5 patients used to calculate waiting time:³ 517

Median time to start treatment⁴ 21 minutes

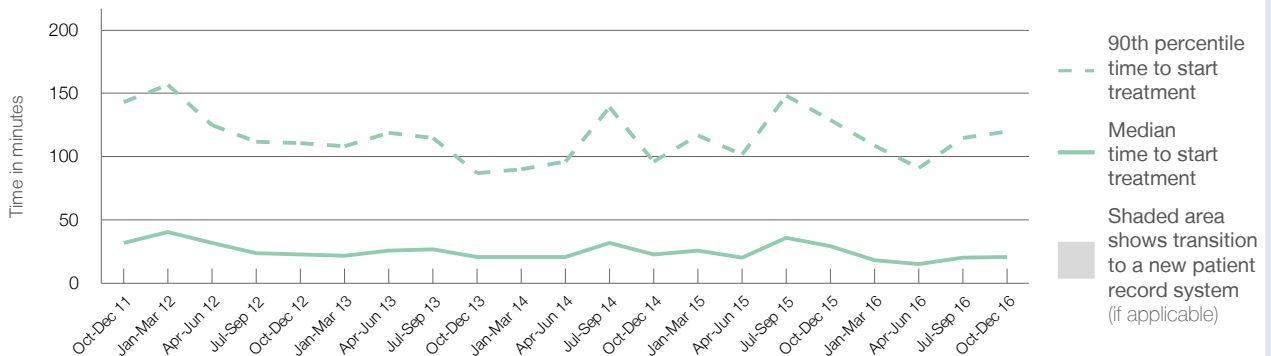
90th percentile time to start treatment⁵ 120 minutes

Same period last year	NSW (this period)
756	514
30 minutes	24 minutes
129 minutes	103 minutes

Percentage of triage 5 patients who received treatment by time, October to December 2016



Time patients waited to start treatment (minutes) for triage 5 patients, October 2011 to December 2016^{†‡}



	Oct-Dec 2011	Oct-Dec 2012	Oct-Dec 2013	Oct-Dec 2014	Oct-Dec 2015	Oct-Dec 2016
Median time to start treatment ⁴ (minutes)	32	23	21	23	30	21
90th percentile time to start treatment ⁵ (minutes)	143	111	87	96	129	120

(†) Data points are not shown in graphs for quarters when patient numbers are too small.

(‡) Caution is advised when interpreting abrupt changes over time at the hospital level. For example, performance before and after trans For more information, see Background Paper: Approaches to reporting time measures of emergency department performance, December 2011.

From March 2017, Hospital Quarterly reports the 90th percentile time, rather than the 95th percentile time, for related ED measures.

Fairfield Hospital: Time patients spent in the ED October to December 2016

All presentations:¹ 8,930 patients

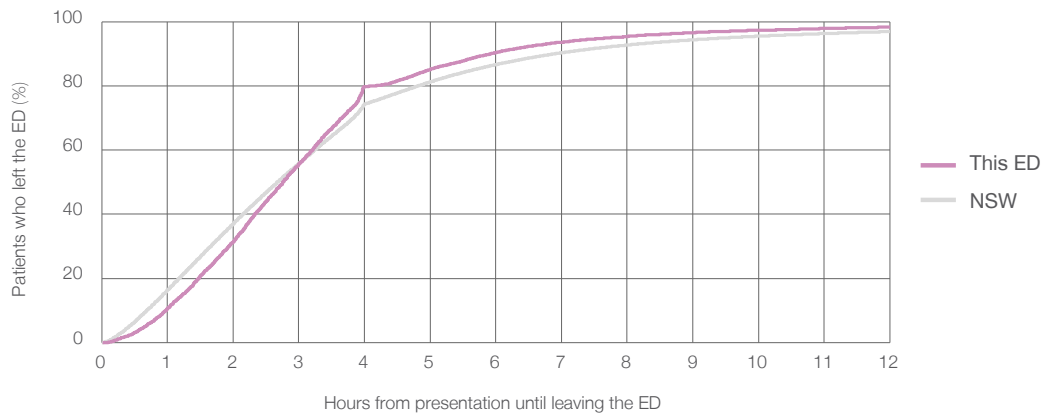
Presentations used to calculate time to leaving the ED:⁶ 8,930 patients

Median time spent in the ED⁸ 2 hours and 46 minutes

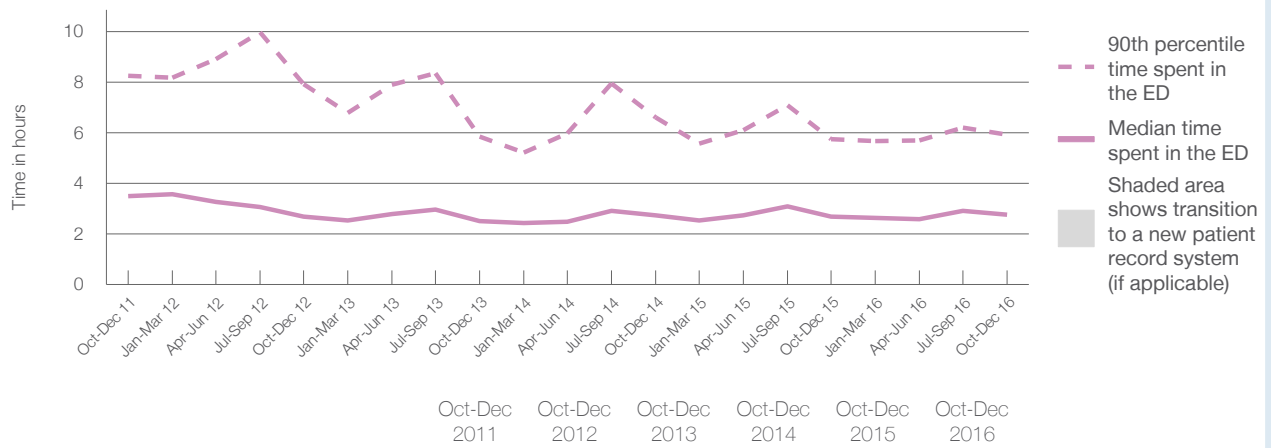
90th percentile time spent in the ED⁹ 5 hours and 56 minutes

Same period last year	NSW (this period)
8,788	8,788
2 hours and 42 minutes	2 hours and 41 minutes
5 hours and 45 minutes	6 hours and 54 minutes

Percentage of patients who left the ED by time, October to December 2016



Time patients spent in the ED, by quarter, October 2011 to December 2016^{†‡}



	Oct-Dec 2011	Oct-Dec 2012	Oct-Dec 2013	Oct-Dec 2014	Oct-Dec 2015	Oct-Dec 2016
Median time to leaving the ED ⁸ (hours, minutes)	3h 30m	2h 42m	2h 31m	2h 45m	2h 42m	2h 46m
90th percentile time to leaving the ED ⁹ (hours, minutes)	8h 16m	7h 56m	5h 51m	6h 36m	5h 45m	5h 56m

(†) Data points are not shown in graphs for quarters when patient numbers are too small.

(‡) Caution is advised when interpreting abrupt changes over time at the hospital level. For example, performance before and after trans For more information, see Background Paper: Approaches to reporting time measures of emergency department performance, December 2011.

From March 2017, Hospital Quarterly reports the 90th percentile time, rather than the 95th percentile time, for related ED measures.

Fairfield Hospital: Time patients spent in the ED

By mode of separation

October to December 2016

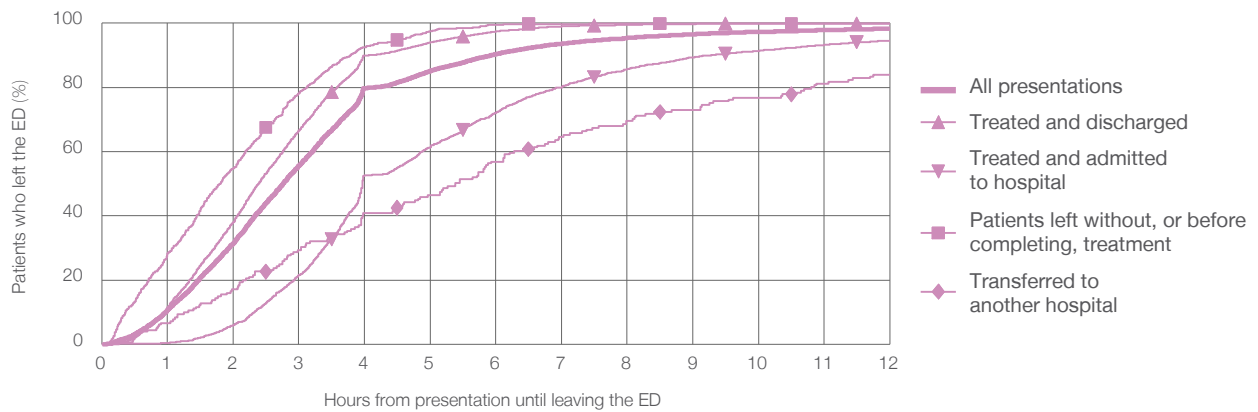
All presentations:¹ 8,930 patients

Presentations used to calculate time to leaving the ED:⁶ 8,930 patients

Treated and discharged	5,532 (61.9%)
Treated and admitted to hospital	2,274 (25.5%)
Patient left without, or before completing, treatment	876 (9.8%)
Transferred to another hospital	181 (2.0%)
Other	67 (0.8%)

Same period last year	Change since one year ago
8,788	1.6%
5,336	3.7%
2,174	4.6%
1,064	-17.7%
139	30.2%
75	-10.7%

Percentage of patients who left the ED by time and mode of separation, October to December 2016^{†‡}



1 hour 2 hours 3 hours 4 hours 6 hours 8 hours 10 hours 12 hours

	1 hour	2 hours	3 hours	4 hours	6 hours	8 hours	10 hours	12 hours
Treated and discharged	11.5%	38.0%	66.5%	89.9%	97.5%	99.5%	100%	100%
Treated and admitted to hospital	0.4%	5.9%	21.6%	52.6%	72.2%	85.8%	91.4%	94.5%
Patient left without, or before completing, treatment	28.2%	54.9%	78.2%	92.6%	99.4%	99.9%	99.9%	99.9%
Transferred to another hospital	6.6%	17.1%	29.3%	40.9%	56.9%	69.6%	76.8%	84.0%
All presentations	10.7%	31.4%	55.7%	79.7%	90.4%	95.4%	97.3%	98.3%

(†) Data points are not shown in graphs for quarters when patient numbers are too small.

(‡) Caution is advised when interpreting abrupt changes over time at the hospital level. For example, performance before and after trans For more information, see Background Paper: Approaches to reporting time measures of emergency department performance, December 2011.

From March 2017, Hospital Quarterly reports the 90th percentile time, rather than the 95th percentile time, for related ED measures.

Fairfield Hospital: Time spent in the ED

Percentage of patients who spent four hours or less in the ED

October to December 2016

All presentations at the emergency department:¹ 8,930 patients

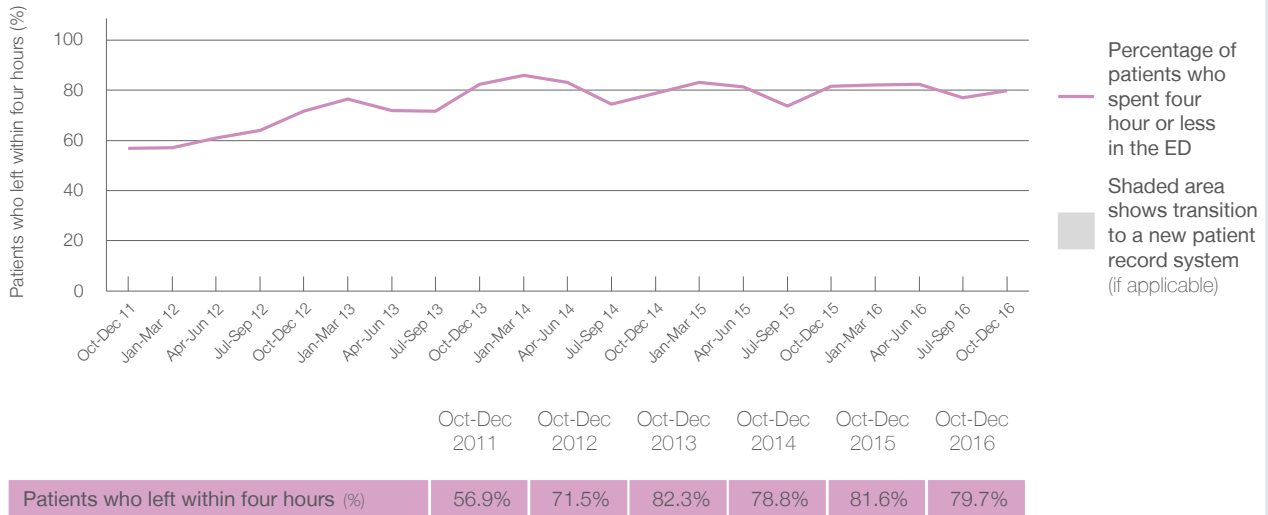
Presentations used to calculate time to leaving the ED:⁶ 8,930 patients

Percentage of patients who spent four hours or less in the ED



	Same period last year	Change since one year ago
All presentations at the emergency department	8,788	1.6%
Presentations used to calculate time to leaving the ED	8,788	1.6%
Percentage of patients who spent four hours or less in the ED	81.6%	

Percentage of patients who spent four hours or less in the ED, by quarter, October 2011 to December 2016^{†‡}



* Suppressed due to small numbers and to protect privacy. Relevant graphs are also suppressed.

† Data points are not shown in graphs for quarters when patient numbers were too small.

‡ Caution is advised when interpreting abrupt changes over time at the hospital level. For example, performance before and after transition to a new information system is not directly comparable. For more information see *Background Paper: Approaches to reporting time measures of emergency department performance, December 2011*.

- All emergency and non-emergency presentations at the emergency department (ED).
- All presentations that have a triage category and are coded as emergency presentations or unplanned return visits.
- Some patients are excluded from ED time measures due to calculation requirements. For details, see the *Technical Supplement: Emergency department measures, January to March 2016*.
- The median is the time by which half of patients started treatment. The other half of patients took equal to or longer than this time.
- The 90th percentile is the time by which 90% of patients started treatment. The final 10% of patients took equal to or longer than this time.
- All presentations that have a departure time.
- Transfer of care time refers to the period between arrival of patients at the ED by ambulance and the transfer of responsibility for their care from paramedics to ED staff in an ED treatment zone. For more information see *Spotlight on Measurement: measuring transfer of care from the ambulance to the emergency department*.
- The median is the time by which half of patients left the ED. The other half of patients took equal to or longer than this time.
- The 90th percentile is the time by which 90% of patients left the ED. The final 10% of patients took equal to or longer than this time.

Note: Presentation time is the earlier of times recorded for the start of clerical registration or the triage process. Treatment time is the earliest time recorded when a healthcare professional provides medical care that is relevant to the patient's presenting problems. For patients who were treated and discharged, departure time is the time when treatment was completed. For all other patients, departure time is the time when the patient actually left the ED.

Note: All percentages are rounded and therefore percentages may not add to 100%.

Sources: ED data from Health Information Exchange, NSW Health (extracted 24 January 2017).
Transfer of care data from Transfer of Care Reporting System (extracted 24 January 2017).