

From March 2017, Hospital Quarterly reports the 90th percentile time, rather than the 95th percentile time, for related ED measures.

Forbes District Hospital: Emergency department (ED) overview

October to December 2016

All presentations:¹ 2,048 patients
Emergency presentations:² 1,793 patients

Same period last year	Change since one year ago
2,492	-17.8%
1,905	-5.9%

Forbes District Hospital: Time patients waited to start treatment³

October to December 2016

Triage 2 Emergency (e.g. chest pain, severe burns): 72 patients

Median time to start treatment⁴ 5 minutes
90th percentile time to start treatment⁵ *

Triage 3 Urgent (e.g. moderate blood loss, dehydration): 251 patients

Median time to start treatment⁴ 13 minutes
90th percentile time to start treatment⁵ 52 minutes

Triage 4 Semi-urgent (e.g. sprained ankle, earache): 560 patients

Median time to start treatment⁴ 25 minutes
90th percentile time to start treatment⁵ 81 minutes

Triage 5 Non-urgent (e.g. small cuts or abrasions): 903 patients

Median time to start treatment⁴ 26 minutes
90th percentile time to start treatment⁵ 117 minutes

Same period last year	NSW (this period)
83	
5 minutes	8 minutes
*	26 minutes
265	
13 minutes	20 minutes
36 minutes	67 minutes
724	
25 minutes	25 minutes
69 minutes	97 minutes
833	
27 minutes	24 minutes
96 minutes	103 minutes

Forbes District Hospital: Time from presentation until leaving the ED

October to December 2016

Attendances used to calculate time to leaving the ED:⁶ 2,048 patients

Percentage of patients who spent four hours or less in the ED 87.1%

Same period last year	Change since one year ago
2,491	-17.8%
93.8%	

* Suppressed due to small number of patients and to protect privacy. Relevant graphs are also suppressed.

- All emergency and non-emergency attendances at the emergency department (ED).
- All attendances that have a triage category and are coded as emergency presentations or unplanned return visits.
- Some patients are excluded from ED time measures due to calculation requirements. For details, see the *Technical Supplement: Emergency department measures, January to March 2016*.
- The median is the time by which half of patients started treatment. The other half of patients waited equal to or longer than this time.
- The 90th percentile is the time by which 90% of patients started treatment. The final 10% of patients waited equal to or longer than this time.
- All presentations that have a departure time.

Note: Presentation time is the earlier time recorded for clerical registration or the triage process. Treatment time is the earliest time recorded when a healthcare professional provides medical care relevant to the patient's presenting problems.

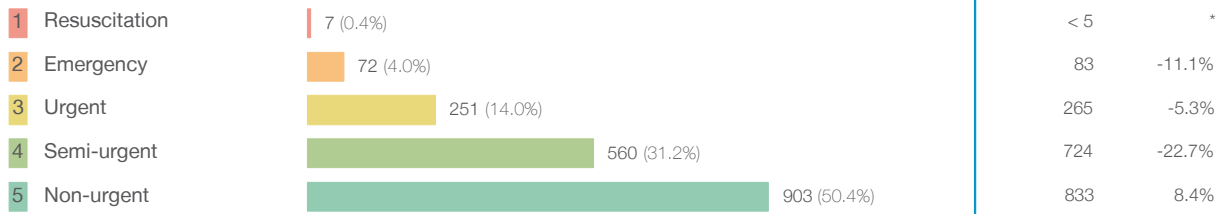
Source: Health Information Exchange, NSW Health (extracted 24 January 2017).

From March 2017, Hospital Quarterly reports the 90th percentile time, rather than the 95th percentile time, for related ED measures.

Forbes District Hospital: Patients presenting to the emergency department October to December 2016

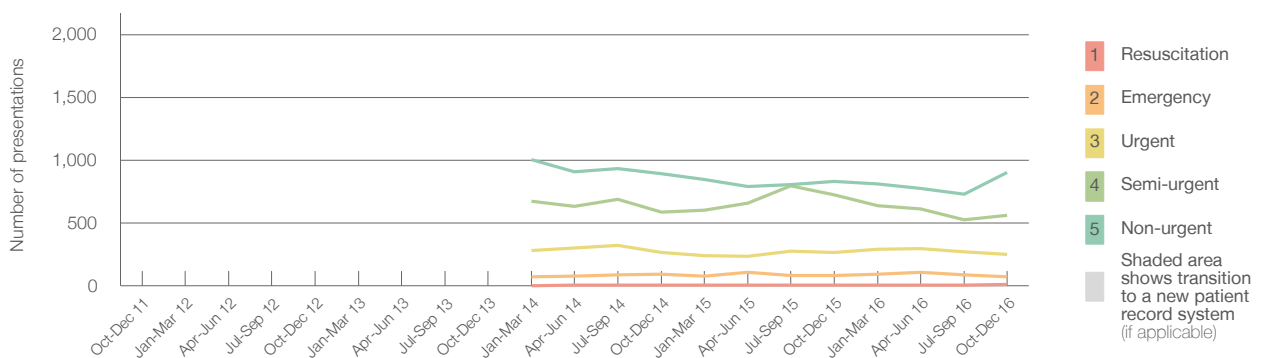
All presentations:¹ 2,048 patients

Emergency presentations² by triage category: 1,793 patients



Same period last year	Change since one year ago
2,492	-17.8%
1,905	-5.9%
< 5	*
83	-11.1%
265	-5.3%
724	-22.7%
833	8.4%

Emergency presentations² by quarter, October 2011 to December 2016 ^{† §}



	Oct-Dec 2011	Oct-Dec 2012	Oct-Dec 2013	Oct-Dec 2014	Oct-Dec 2015	Oct-Dec 2016
Resuscitation				< 5	< 5	7
Emergency				96	83	72
Urgent				267	265	251
Semi-urgent				585	724	560
Non-urgent				893	833	903
All emergency presentations				1,841	1,905	1,793

Forbes District Hospital: Patients arriving by ambulance October to December 2016

Arrivals used to calculate transfer of care time:⁷ 159 patients

ED Transfer of care time



Same period last year	Change since one year ago
53	
30 minutes	-21 minutes
*	*

(†) Data points are not shown in graphs for quarters when patient numbers are too small.

(‡) Caution is advised when interpreting abrupt changes over time at the hospital level. For example, performance before and after trans For more information, see Background Paper: Approaches to reporting time measures of emergency department performance, December 2011.

(§) Quarterly information for this hospital is shown where data are available from the Health Information Exchange, NSW Health. For more information, see Background Paper: Approaches to reporting time measures of emergency department performance, December 2011.

From March 2017, Hospital Quarterly reports the 90th percentile time, rather than the 95th percentile time, for related ED measures.

Forbes District Hospital: Time patients waited to start treatment, triage 2 October to December 2016

Triage 2 Emergency (e.g. chest pain, severe burns)

Number of triage 2 patients: 72

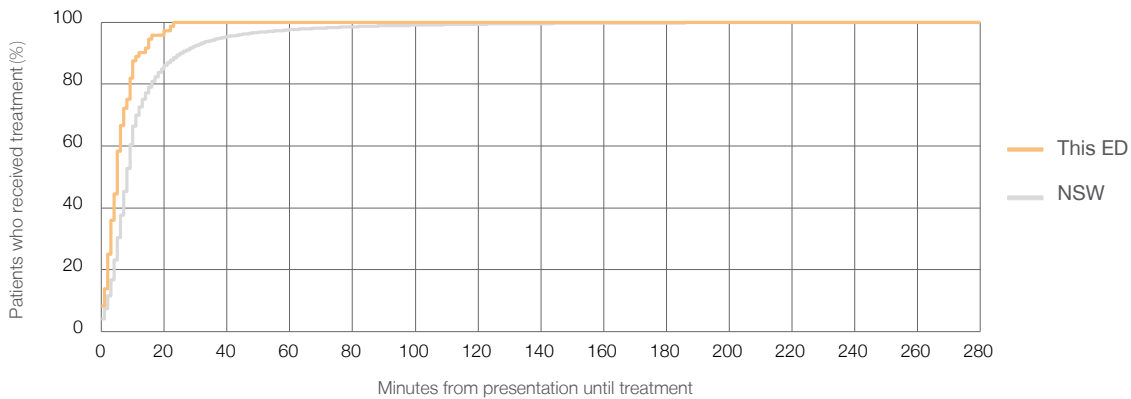
Number of triage 2 patients used to calculate waiting time:³ 72

Median time to start treatment⁴ 5 minutes

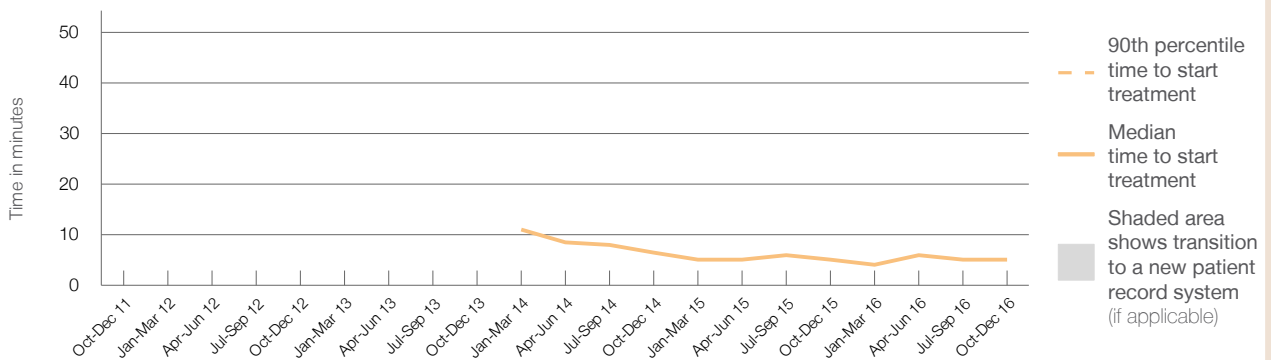
90th percentile time to start treatment⁵ *

Same period last year	NSW (this period)
83	
81	
5 minutes	8 minutes
*	26 minutes

Percentage of triage 2 patients who received treatment by time, October to December 2016



Time patients waited to start treatment (minutes) for triage 2 patients, October 2011 to December 2016^{†‡§}



	Oct-Dec 2011	Oct-Dec 2012	Oct-Dec 2013	Oct-Dec 2014	Oct-Dec 2015	Oct-Dec 2016
Median time to start treatment ⁴ (minutes)				7	5	5
90th percentile time to start treatment ⁵ (minutes)				*	*	*

(†) Data points are not shown in graphs for quarters when patient numbers are too small.

(‡) Caution is advised when interpreting abrupt changes over time at the hospital level. For example, performance before and after trans For more information, see Background Paper: Approaches to reporting time measures of emergency department performance, December 2011.

(§) Quarterly information for this hospital is shown where data are available from the Health Information Exchange, NSW Health. For more information, see Background Paper: Approaches to reporting time measures of emergency department performance, December 2011.

From March 2017, Hospital Quarterly reports the 90th percentile time, rather than the 95th percentile time, for related ED measures.

Forbes District Hospital: Time patients waited to start treatment, triage 3 October to December 2016

Triage 3 Urgent (e.g. moderate blood loss, dehydration)

Number of triage 3 patients: 251

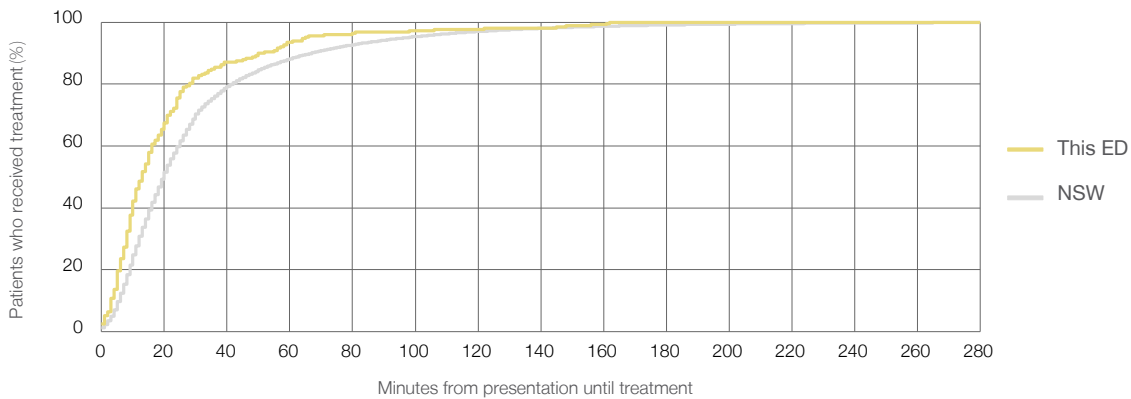
Number of triage 3 patients used to calculate waiting time:³ 249

Median time to start treatment⁴ 13 minutes

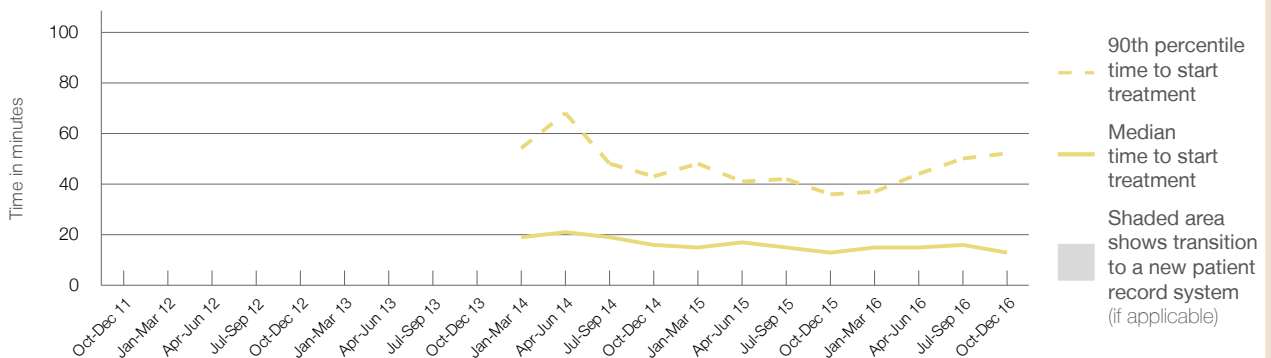
90th percentile time to start treatment⁵ 52 minutes

Same period last year	NSW (this period)
265	
259	
13 minutes	20 minutes
36 minutes	67 minutes

Percentage of triage 3 patients who received treatment by time, October to December 2016



Time patients waited to start treatment (minutes) for triage 3 patients, October 2011 to December 2016^{†‡§}



	Oct-Dec 2011	Oct-Dec 2012	Oct-Dec 2013	Oct-Dec 2014	Oct-Dec 2015	Oct-Dec 2016
Median time to start treatment ⁴ (minutes)				16	13	13
90th percentile time to start treatment ⁵ (minutes)				43	36	52

(†) Data points are not shown in graphs for quarters when patient numbers are too small.

(‡) Caution is advised when interpreting abrupt changes over time at the hospital level. For example, performance before and after trans For more information, see Background Paper: Approaches to reporting time measures of emergency department performance, December 2011.

(§) Quarterly information for this hospital is shown where data are available from the Health Information Exchange, NSW Health. For more information, see Background Paper: Approaches to reporting time measures of emergency department performance, December 2011.

From March 2017, Hospital Quarterly reports the 90th percentile time, rather than the 95th percentile time, for related ED measures.

Forbes District Hospital: Time patients waited to start treatment, triage 4 October to December 2016

Triage 4 Semi-urgent (e.g. sprained ankle, earache)

Number of triage 4 patients: 560

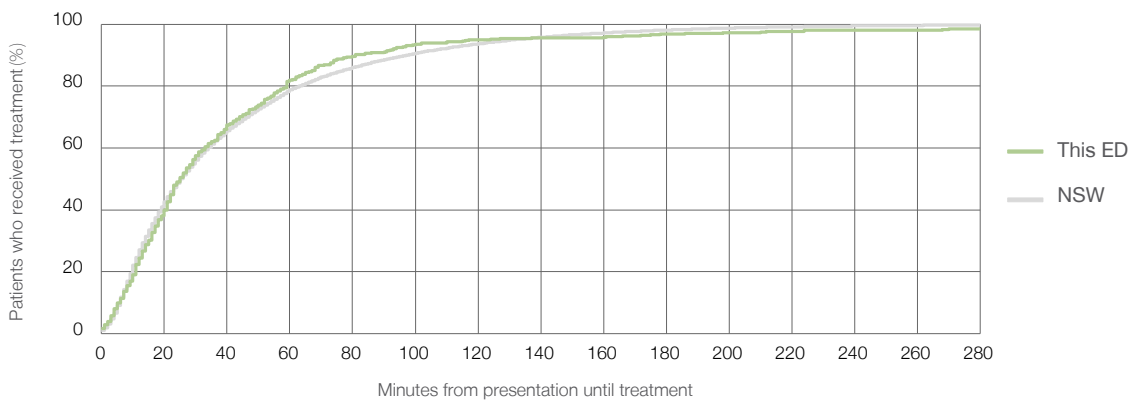
Number of triage 4 patients used to calculate waiting time:³ 538

Median time to start treatment⁴ 25 minutes

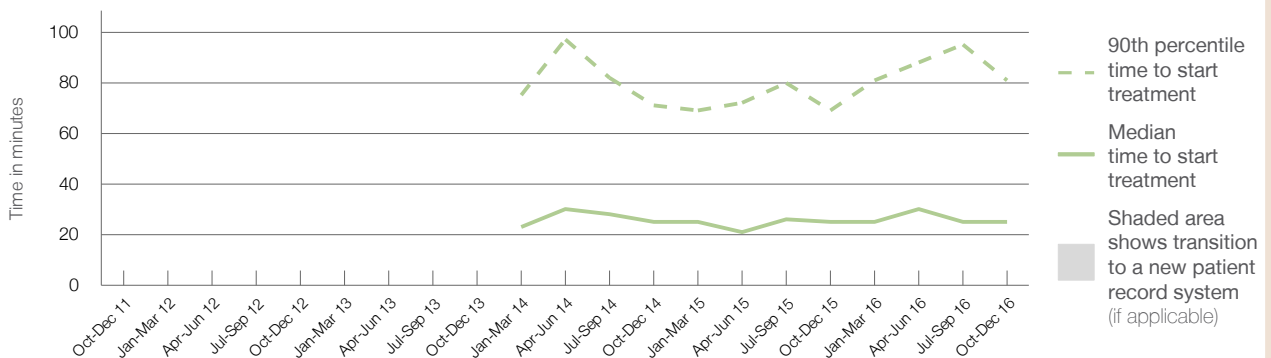
90th percentile time to start treatment⁵ 81 minutes

Same period last year	NSW (this period)
724	703
25 minutes	25 minutes
69 minutes	97 minutes

Percentage of triage 4 patients who received treatment by time, October to December 2016



Time patients waited to start treatment (minutes) for triage 4 patients, October 2011 to December 2016^{†‡§}



	Oct-Dec 2011	Oct-Dec 2012	Oct-Dec 2013	Oct-Dec 2014	Oct-Dec 2015	Oct-Dec 2016
Median time to start treatment ⁴ (minutes)				25	25	25
90th percentile time to start treatment ⁵ (minutes)				71	69	81

(†) Data points are not shown in graphs for quarters when patient numbers are too small.

(‡) Caution is advised when interpreting abrupt changes over time at the hospital level. For example, performance before and after trans For more information, see Background Paper: Approaches to reporting time measures of emergency department performance, December 2011.

(§) Quarterly information for this hospital is shown where data are available from the Health Information Exchange, NSW Health. For more information, see Background Paper: Approaches to reporting time measures of emergency department performance, December 2011.

From March 2017, Hospital Quarterly reports the 90th percentile time, rather than the 95th percentile time, for related ED measures.

Forbes District Hospital: Time patients waited to start treatment, triage 5 October to December 2016

Triage 5 Non-urgent (e.g. small cuts or abrasions)

Number of triage 5 patients: 903

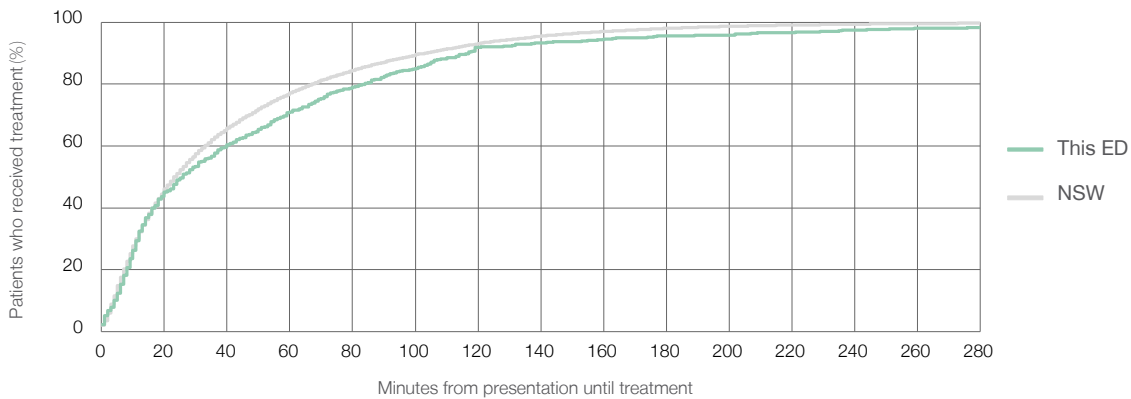
Number of triage 5 patients used to calculate waiting time:³ 798

Median time to start treatment⁴ 26 minutes

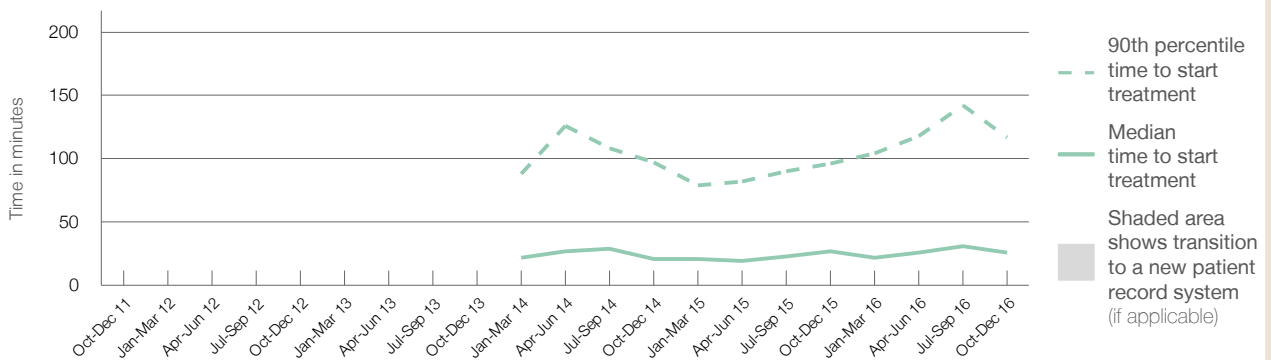
90th percentile time to start treatment⁵ 117 minutes

Same period last year	NSW (this period)
833	798
27 minutes	24 minutes
96 minutes	103 minutes

Percentage of triage 5 patients who received treatment by time, October to December 2016



Time patients waited to start treatment (minutes) for triage 5 patients, October 2011 to December 2016^{†‡§}



	Oct-Dec 2011	Oct-Dec 2012	Oct-Dec 2013	Oct-Dec 2014	Oct-Dec 2015	Oct-Dec 2016
Median time to start treatment ⁴ (minutes)				21	27	26
90th percentile time to start treatment ⁵ (minutes)				97	96	117

(†) Data points are not shown in graphs for quarters when patient numbers are too small.

(‡) Caution is advised when interpreting abrupt changes over time at the hospital level. For example, performance before and after trans For more information, see Background Paper: Approaches to reporting time measures of emergency department performance, December 2011.

(§) Quarterly information for this hospital is shown where data are available from the Health Information Exchange, NSW Health. For more information, see Background Paper: Approaches to reporting time measures of emergency department performance, December 2011.

From March 2017, Hospital Quarterly reports the 90th percentile time, rather than the 95th percentile time, for related ED measures.

Forbes District Hospital: Time patients spent in the ED

October to December 2016

All presentations:¹ 2,048 patients

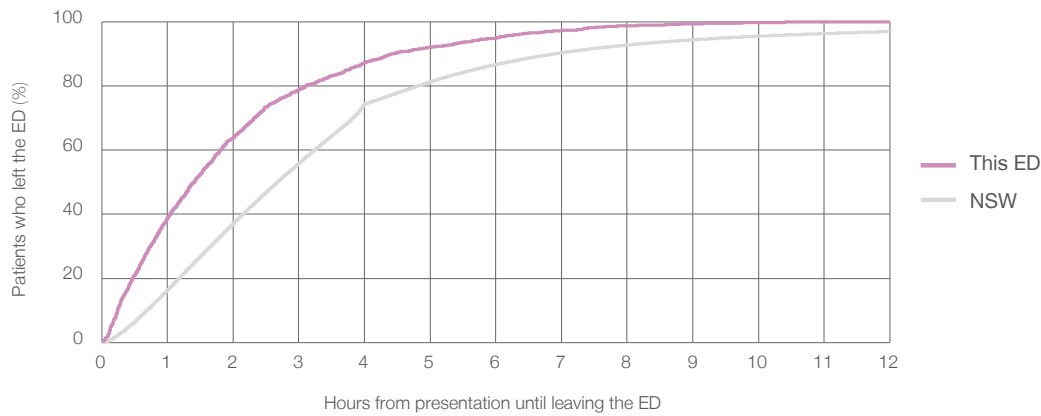
Presentations used to calculate time to leaving the ED:⁶ 2,048 patients

Median time spent in the ED⁸ 1 hours and 25 minutes

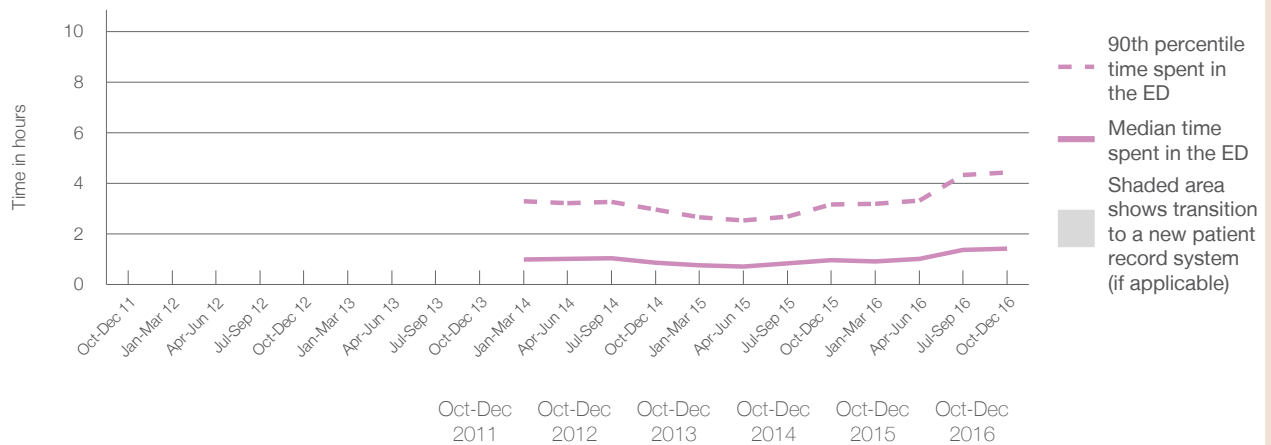
90th percentile time spent in the ED⁹ 4 hours and 26 minutes

Same period last year	NSW (this period)
2,492	
2,491	
0 hours and 59 minutes	2 hours and 41 minutes
3 hours and 11 minutes	6 hours and 54 minutes

Percentage of patients who left the ED by time, October to December 2016



Time patients spent in the ED, by quarter, October 2011 to December 2016^{†‡§}



Median time to leaving the ED ⁸ (hours, minutes)				0h 53m	0h 59m	1h 25m
90th percentile time to leaving the ED ⁹ (hours, minutes)				2h 58m	3h 11m	4h 26m

(†) Data points are not shown in graphs for quarters when patient numbers are too small.

(‡) Caution is advised when interpreting abrupt changes over time at the hospital level. For example, performance before and after trans For more information, see Background Paper: Approaches to reporting time measures of emergency department performance, December 2011.

(§) Quarterly information for this hospital is shown where data are available from the Health Information Exchange, NSW Health. For more information, see Background Paper: Approaches to reporting time measures of emergency department performance, December 2011.

From March 2017, Hospital Quarterly reports the 90th percentile time, rather than the 95th percentile time, for related ED measures.

Forbes District Hospital: Time patients spent in the ED

By mode of separation

October to December 2016

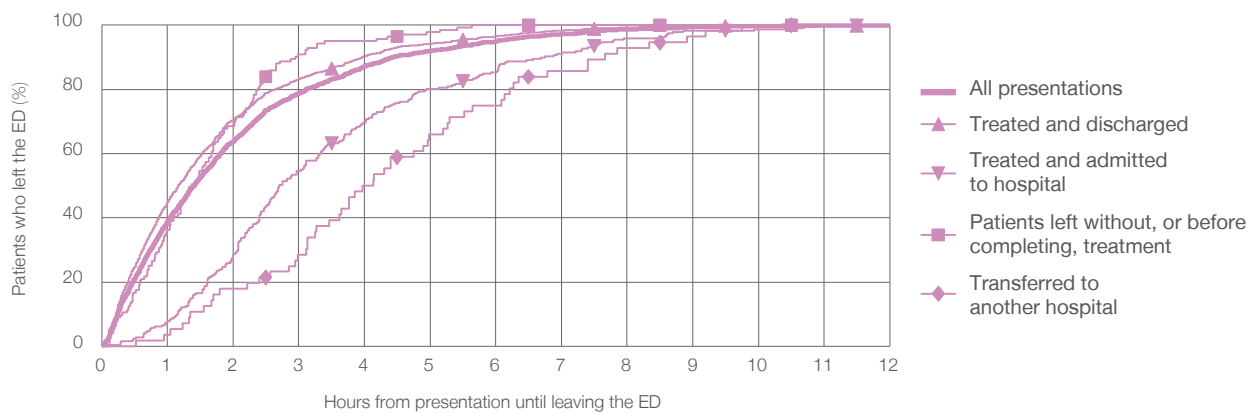
All presentations:¹ 2,048 patients

Presentations used to calculate time to leaving the ED:⁶ 2,048 patients

Treated and discharged	1,585 (77.4%)
Treated and admitted to hospital	247 (12.1%)
Patient left without, or before completing, treatment	143 (7.0%)
Transferred to another hospital	56 (2.7%)
Other	17 (0.8%)

Same period last year	Change since one year ago
2,491	-17.8%
2,125	-25.4%
230	7.4%
71	101.4%
60	-6.7%
6	183.3%

Percentage of patients who left the ED by time and mode of separation, October to December 2016^{†‡§}



1 hour 2 hours 3 hours 4 hours 6 hours 8 hours 10 hours 12 hours

Treated and discharged	44.9%	70.5%	83.2%	90.3%	96.5%	99.2%	99.8%	99.9%
Treated and admitted to hospital	7.7%	28.7%	54.7%	69.6%	85.4%	96.0%	98.8%	100%
Patient left without, or before completing, treatment	36.4%	68.5%	90.9%	95.1%	100%	100%	100%	100%
Transferred to another hospital	3.6%	17.9%	28.6%	50.0%	75.0%	92.9%	100%	100%
All presentations	38.9%	63.9%	78.8%	87.1%	94.9%	98.7%	99.7%	100%

(†) Data points are not shown in graphs for quarters when patient numbers are too small.

(‡) Caution is advised when interpreting abrupt changes over time at the hospital level. For example, performance before and after trans For more information, see Background Paper: Approaches to reporting time measures of emergency department performance, December 2011.

(§) Quarterly information for this hospital is shown where data are available from the Health Information Exchange, NSW Health. For more information, see Background Paper: Approaches to reporting time measures of emergency department performance, December 2011.

From March 2017, Hospital Quarterly reports the 90th percentile time, rather than the 95th percentile time, for related ED measures.

Forbes District Hospital: Time spent in the ED

Percentage of patients who spent four hours or less in the ED

October to December 2016

All presentations at the emergency department:¹ 2,048 patients

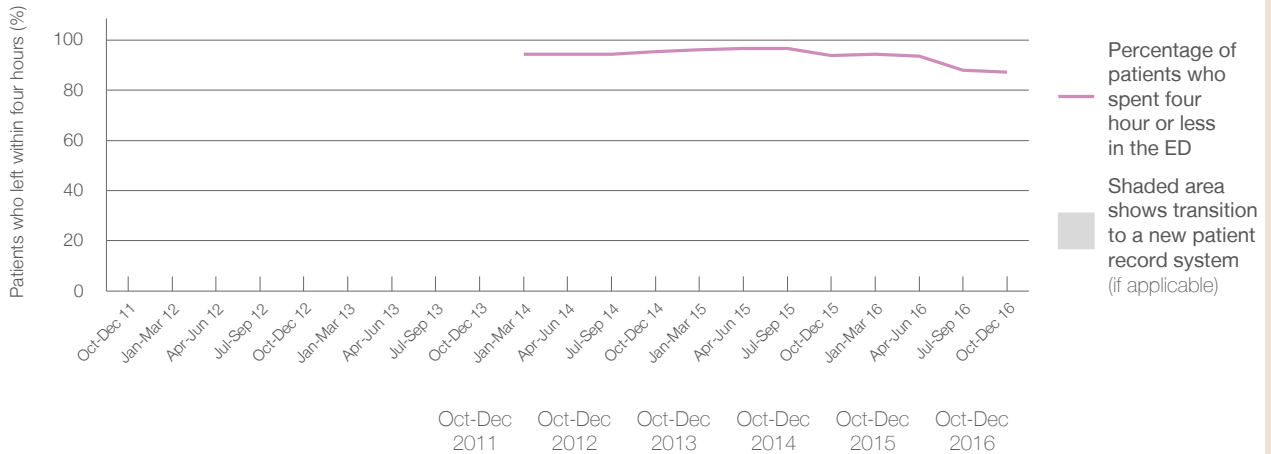
Presentations used to calculate time to leaving the ED:⁶ 2,048 patients

Percentage of patients who spent four hours or less in the ED



	Same period last year	Change since one year ago
All presentations at the emergency department: ¹	2,492	-17.8%
Presentations used to calculate time to leaving the ED: ⁶	2,491	-17.8%
Percentage of patients who spent four hours or less in the ED	93.8%	

Percentage of patients who spent four hours or less in the ED, by quarter, October 2011 to December 2016^{†‡§}



Patients who left within four hours (%)	Oct-Dec 2011	Oct-Dec 2012	Oct-Dec 2013	Oct-Dec 2014	Oct-Dec 2015	Oct-Dec 2016
				95.2%	93.8%	87.1%

* Suppressed due to small numbers and to protect privacy. Relevant graphs are also suppressed.

† Data points are not shown in graphs for quarters when patient numbers were too small.

‡ Caution is advised when interpreting abrupt changes over time at the hospital level. For example, performance before and after transition to a new information system is not directly comparable. For more information see *Background Paper: Approaches to reporting time measures of emergency department performance, December 2011*.

§ Quarterly information for this hospital is shown where data are available from the Health Information Exchange, NSW Health. For more information, see *Background Paper: Approaches to reporting time measures of emergency department performance, December 2011*.

- All emergency and non-emergency presentations at the emergency department (ED).
- All presentations that have a triage category and are coded as emergency presentations or unplanned return visits.
- Some patients are excluded from ED time measures due to calculation requirements. For details, see the *Technical Supplement: Emergency department measures, January to March 2016*.
- The median is the time by which half of patients started treatment. The other half of patients took equal to or longer than this time.
- The 90th percentile is the time by which 90% of patients started treatment. The final 10% of patients took equal to or longer than this time.
- All presentations that have a departure time.
- Transfer of care time refers to the period between arrival of patients at the ED by ambulance and the transfer of responsibility for their care from paramedics to ED staff in an ED treatment zone. For more information see *Spotlight on Measurement: measuring transfer of care from the ambulance to the emergency department*.
- The median is the time by which half of patients left the ED. The other half of patients took equal to or longer than this time.
- The 90th percentile is the time by which 90% of patients left the ED. The final 10% of patients took equal to or longer than this time.

Note: Presentation time is the earlier of times recorded for the start of clerical registration or the triage process. Treatment time is the earliest time recorded when a healthcare professional provides medical care that is relevant to the patient's presenting problems. For patients who were treated and discharged, departure time is the time when treatment was completed. For all other patients, departure time is the time when the patient actually left the ED.

Note: All percentages are rounded and therefore percentages may not add to 100%.

Sources: ED data from Health Information Exchange, NSW Health(extracted 24 January 2017).
Transfer of care data from Transfer of Care Reporting System(extracted 24 January 2017).